



July 6, 2023

City of North Las Vegas Planning Department
2250 Las Vegas Boulevard North, Suite 114
North Las Vegas, Nevada 89030

Re: WOW Grand Teton & Decatur

To Whom It May Concern:

The following are revisions per comments.

The trash enclosure elevations have been added. The parking/vacuum stalls have been adjusted to accommodate 6' landscape areas at each end of parking. The foundation planters have been added to the north and west side of the building.

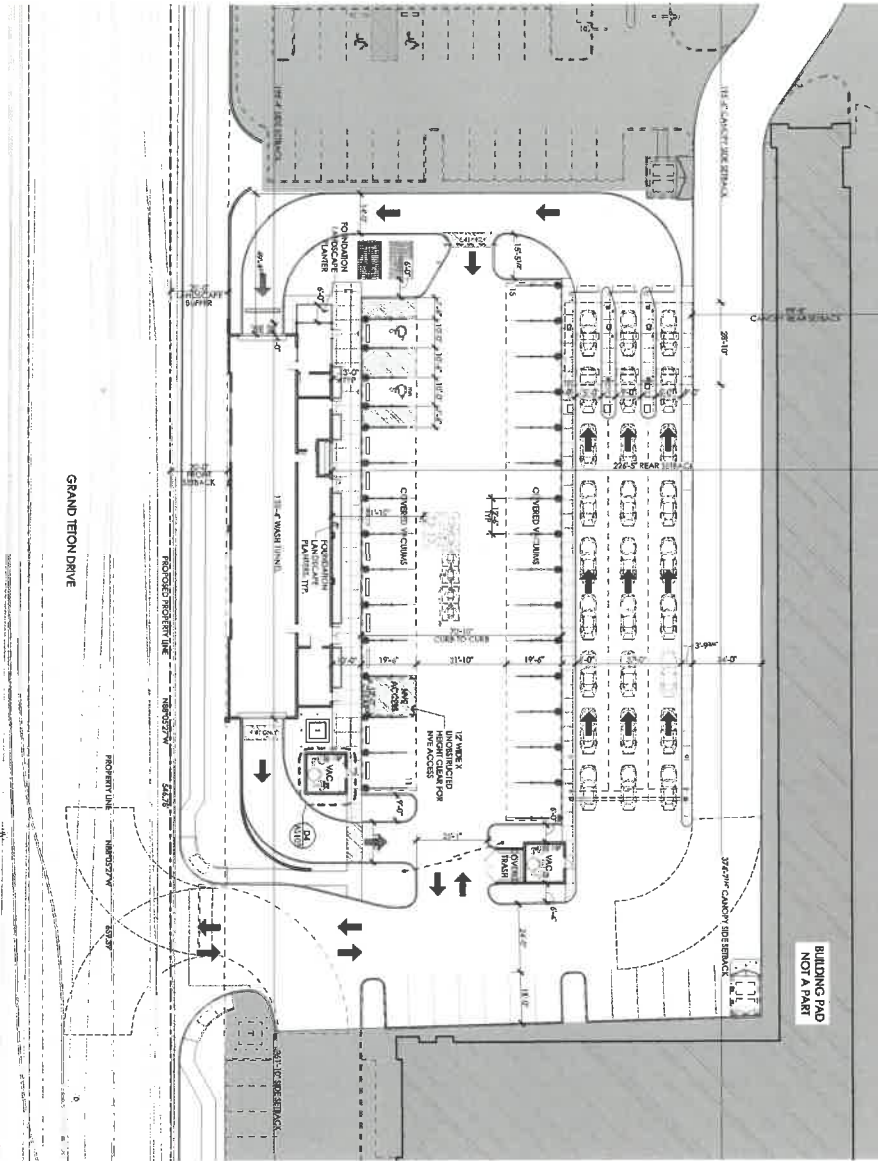
Sincerely,

A handwritten signature in black ink, appearing to read "Frances Grob". The signature is fluid and cursive, with a long horizontal stroke at the end.

Frances Grob
aptus

SCALE: 1" = 20'

GRAND TETON DRIVE



TRASH/VAC ENCLOSURE SOUTH ELEV.

TRASH/VAC ENCL. EAST ELEVATION

TRASH/VAC ENCLOSURE NORTH ELEV.

CANILEVER STRUCTURE, ROOF AND METAL MESH TO COVER GATES, SEE STRUCTURAL

Entered 7/6/2023
SID 32-2023

aptus

241 W. Charleston Blvd.
Suite 145
Las Vegas, Nevada
89102
P 702.839.1200
F 702.839.1213

WOW Grand Teton & Decatur
Construction Documents
8008 North Decatur Boulevard
North Las Vegas, NV 89131

DRAWING NO.
AS101
117.837-14 NOW OFFER TOWER A

TITLE	DATE
SITE PLAN	

100% CD's/ Owner Review	7.13.23
-------------------------	---------

REVISED LANDSCAPE PLAN 7/25/2023



TREES BOTANICAL / COMM

REFERENCE NOTES

Scale: 1" = 20' - 0"



TITLE
LANDSCAPE PLANTING PLAN

RAWING NO. **L1.01**

117.537.14 WCM' Ground Telson & Decolar | WMSA APQ2022

241 W. Charleston Blvd.
Suite 145
Las Vegas, Nevada
89102
P 702.839.1200
F 702.839.1213

WOW Craig & 5th Street
Construction Documents
8008 North Decatur Boulevard
North Las Vegas, NV 89131