

**Recording this report will
affect the following parcels:**

**APN 123-33-501-004
APN 123-33-501-005 & 123-33-501-006**

**APPORTIONMENT REPORT
AND FINAL ASSESSMENT ROLL
AMENDMENT NUMBER 1**

September 5, 2017

**SPECIAL IMPROVEMENT DISTRICT NO. 65
Northern Beltway Commercial Area
(Original Assessment # 121, Prologis Parcel)**

**Formerly all or portions of:
APN 123-33-501-004**

FOR

CITY OF NORTH LAS VEGAS

Prepared By:

**Gomez Consulting Group, Inc.
1168 Center Point Drive
Henderson, Nevada 89074-8815**

**After recording, please return to:
Catherine A. Raynor, MMC
City Clerk
City of North Las Vegas
2266 Civic Center Drive
North Las Vegas, Nevada 89030-6316**

TABLE OF CONTENTS

	Page
GENERAL.....	1
AUTHORIZATION.....	2
APPORTIONMENT WORKSHEET & ASSESSOR'S MAP	3
APPORTIONMENT OF ASSESSMENT	4
ENGINEER'S CERTIFICATE.....	5

GENERAL

The program developed for SID 65 requires the assignment of Assessments based on the area (acreage) of each divided parcel until such time as the parcels reach their final configuration. These Assessments must be distributed in accordance with the methodology presented in the Final Feasibility Report, dated May 12, 2017. As the project develops and parcels are divided, the apportionment process will be used to distribute the subsequent assignment of new assessments until each parcel reaches its final configuration. This process will distribute the assessment lien consistent with the methodology described in the aforementioned report prepared by Gomez Consulting Group, Inc., (the Assessment Engineer) dated May 12, 2017, on file in the City of North Las Vegas City Clerk and Director of Public Works Offices. A description of the entire project, including the final assessment of each parcel is included in said report, which is a portion of **City of North Las Vegas Assessment Ordinance No. 2793 adopted on April 19, 2017**. This report provides the information necessary for the City of North Las Vegas to collect the assessment debt service based on the development status of the District.

AUTHORIZATION

NRS 271.425 authorizes the City Council to apportion the assessment onto newly divided parcels that are a part of SID 65. The process is described in the Methodology section of the Final Feasibility Report. The Parcel Map(s) prepared to divide APN 123-33-501-004 that was original assessment parcel # 121, are not included in this report, but are recorded in Book 121, Page 94 of Parcel Maps recorded in the Clark County Assessor's Office, Clark County Nevada USA.

APPORTIONMENT WORKSHEET & ASSESSOR'S MAP

Apportionment Worksheet (1 page)

Assessor's Parcel Map dated 1/31/2017 (1 page)



**City of North Las Vegas SID 65
Northern Beltway Commercial Area
Apportionment Report # 1**

By: M. Gomez

September 5, 2017

Original APN: 123-33-501-004

* Parcel Map Book & Page: 121-94

Total Final Assessments: \$ 1,163,112.92

Assessable Parcels: 2

Non-Assessable Parcels: 0

[illegible]

This map is for assessment use only and does NOT represent a survey. No liability is assumed for the accuracy of the data delineated herein. Information on roads and other non-assessed parcels may be obtained from the Road Document Listing in the Assessor's Office.

This map is compiled from official records, including surveys and deeds and only contains the information required for assessment. See the recorded documents for more detailed legal information.



ASSESSOR'S PARCELS - CLARK CO., NV
Michele W. Shafe - Assessor

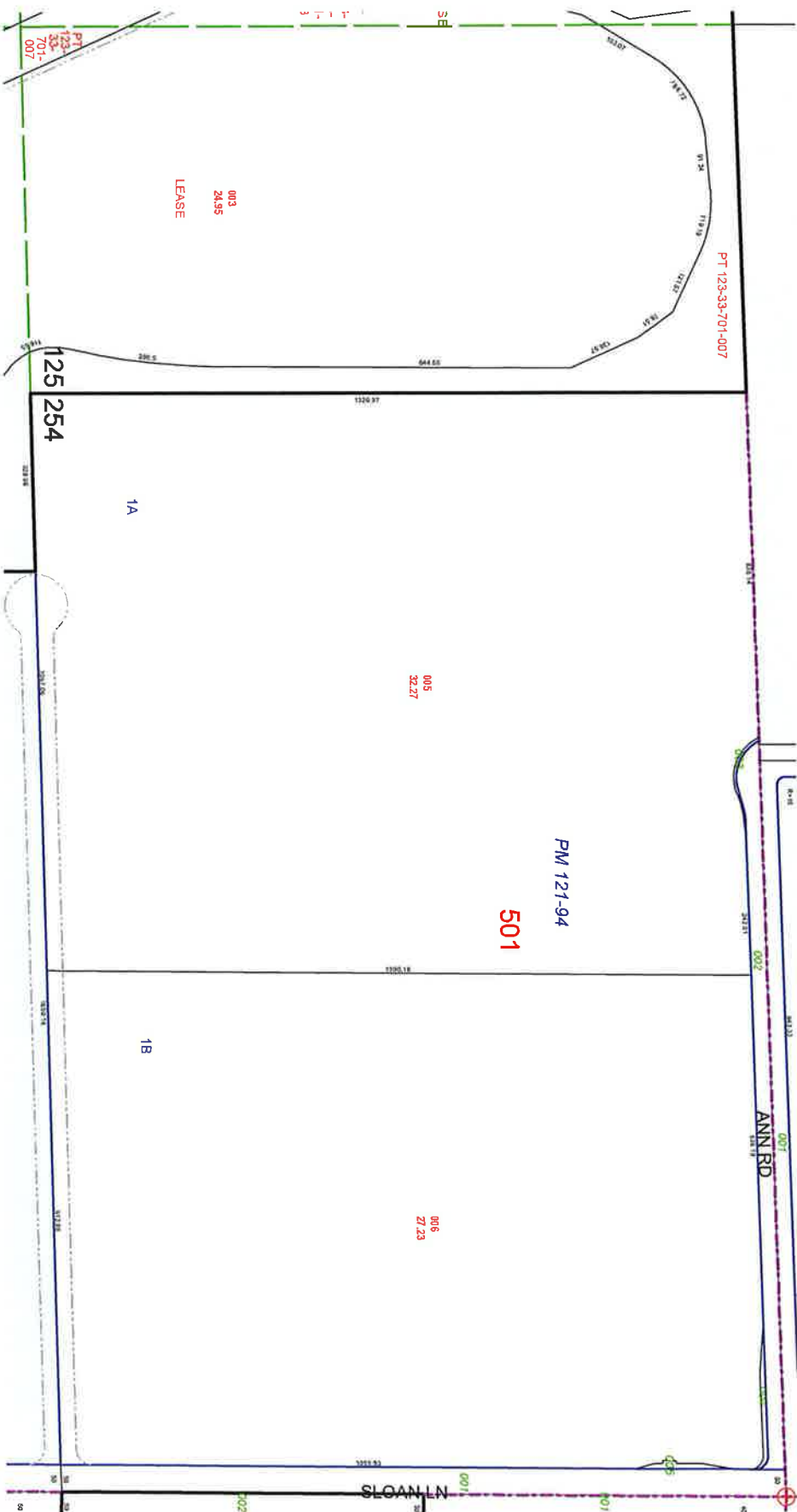
Michele W. Shafe - Assessor

	PARCEL BOUNDARY		CONDOMINIUM UNIT
	SUB BOUNDARY		AIR SPACE PCL.
	PAVED DRIVEWAY		RIGHT OF WAY PCL.
	MATCH / LEADER LINE		SUB-SURFACE PCL.
	HISTORIC SUB DIVISION		
	HISTORIC PAID BOUNDARY		
	SECTION LINE		

	007 ROAD PARCEL NUMBER
	1001 PARCEL NUMBER
	100 AVERAGE
	202 PARCEL SURFCEC NUMBER
	P8-24-45 LOT RECORDING NUMBER
	5 BLOCK NUMBER
	5 LOT NUMBER
	G65 COPY LOT NUMBER

BOOK	T199S R62E			SEC.	33		
101	102	103					
124	123	122					
139	140	141					
162	161	160					

MAP	
N 2 NE 4	
8	4
5	1
6	2
7	3
8	4
5	1



TAX DIST 125,254

APPORTIONMENT OF ASSESSMENT

Apportionment of Assessment (1 page)

APPORTIONMENT OF ASSESSMENT

As the Finance Director of the City of North Las Vegas:

- 1) I hereby apportion to each separate part of the original tract of land the proportionate part of the amount remaining unpaid on the assessment using the methodology established by the City Council in the **City of North Las Vegas Assessment Ordinance No. 2793, dated April 19, 2017.**
- 2) The current payment status of any of the assessment may be obtained by contacting the Office of the Finance Director.

City of North Las Vegas

Finance Director

Date

APPROVED

City of North Las Vegas

Date of Council Action

Jennifer Doody, P.E., CFM
Director of Public Works

Date

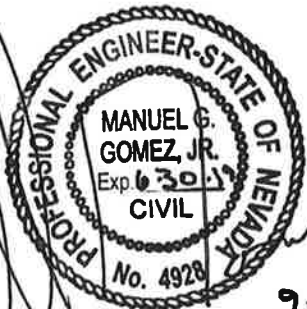
ENGINEER'S CERTIFICATE

As authorized under the provisions of NRS 271.425, the following information is presented in support of this apportionment:

State of Nevada}
 } SS.
County of Clark}

To the City Council of the City of North Las Vegas, Nevada:

It is my professional opinion that the following apportionment has been performed according to the assessment methodology established in the Final Feasibility Report prepared by me for **Special Improvement District 65**; said report being a part of **City of North Las Vegas Ordinance No. 2793 adopted on April 19, 2017**. According to my best professional judgment, the contents of this Apportionment Report conform in all things to the provisions of Chapter 271 of NRS.



[Handwritten signature]
9/5/17
Assessment Engineer
Gomez Consulting Group, Inc.
Manny G. Gomez, P.E.

Recorder Certification

--