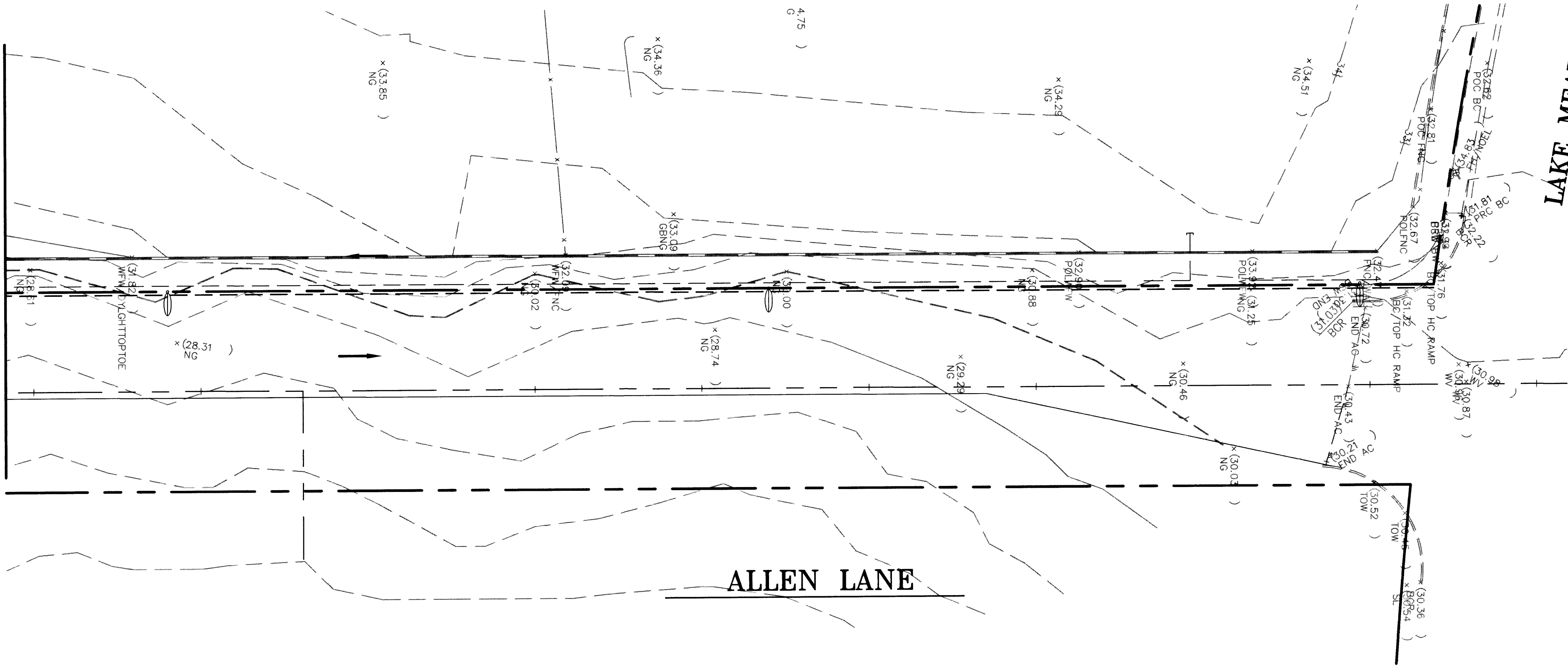
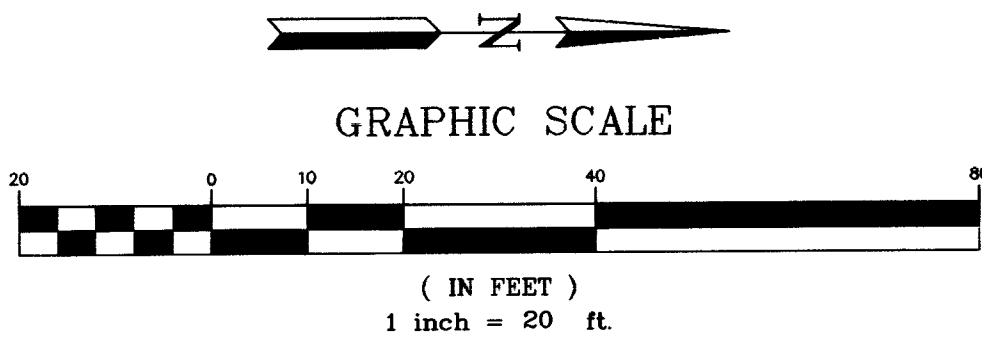
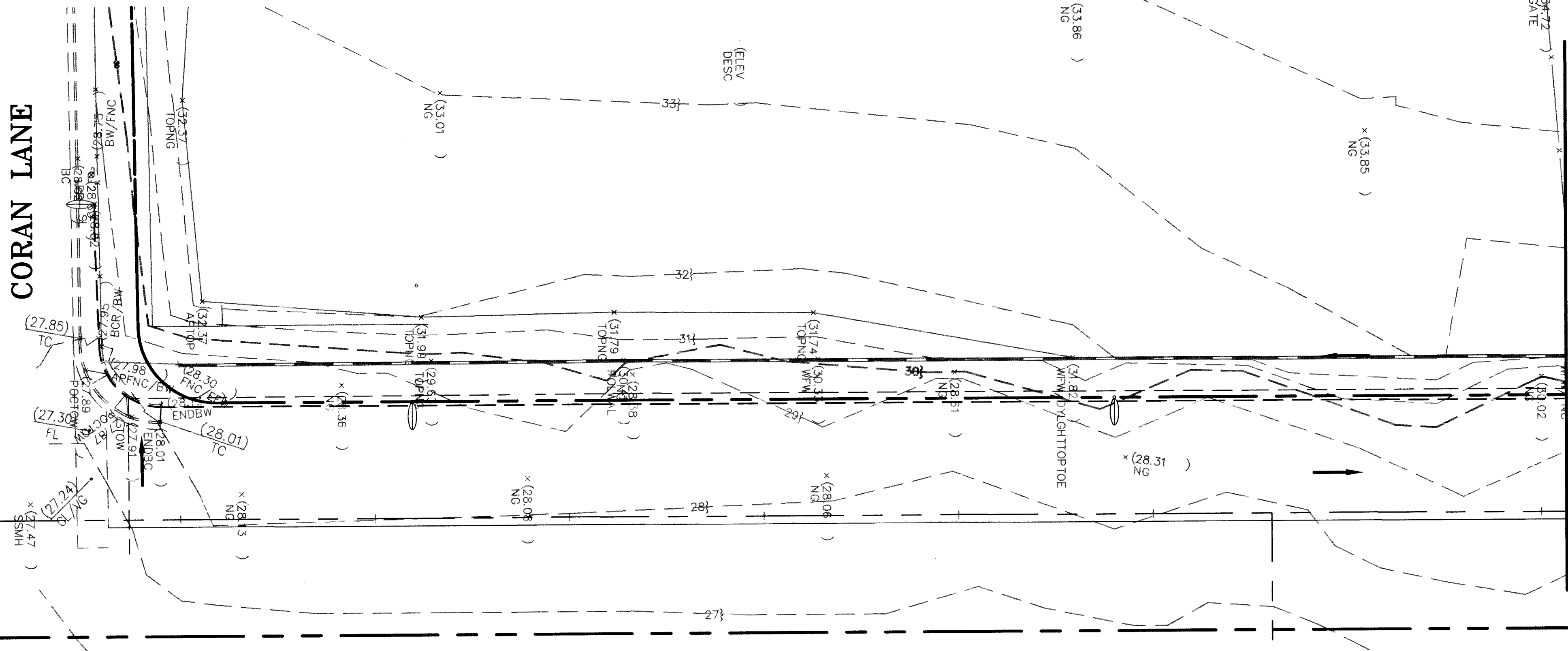


FOR CONTINUATION SEE BELOW



FOR CONTINUATION SEE ABOVE



BASIS OF BEARING

THE BASIS OF BEARING IS THE CENTERLINE ALIGNMENT OF RANCHO ROAD BETWEEN LAKE MEAD BOULEVARD AND CORAN LANE BEING N 36° 42' 03" W.

BENCHMARK

RIVET AND 2" ROUND ALUMINUM DISK, STAMPED NORTH LAS VEGAS. BM NO. NLV0119E4 IN THE TOP OF CURB AT THE NORTHWEST CORNER OF THE INTERSECTION OF CORAN AND ALLEN LANE. NAVD88 ELEVATION = 2128.25' NAVD88 ELEVATION = 648.699 METERS

LEGEND

EXISTING	PROPOSED	EXISTING	PROPOSED
--- RIGHT-OF-WAY	--- RIGHT-OF-WAY	--- SCREEN / RETAINING WALL	--- SCREEN / RETAINING WALL
--- CENTERLINE	--- CENTERLINE	--- CHAIN LINK FENCE	--- CHAIN LINK FENCE
--- WATER LINE	--- WATER LINE	--- TRASH ENCLOSURE	--- TRASH ENCLOSURE
--- SANITARY SEWER LINE	--- SANITARY SEWER LINE	--- GRADE BREAK	--- GRADE BREAK
--- GAS LINE	--- GAS LINE	--- WIRE FENCE	--- WIRE FENCE
--- STORM DRAIN	--- STORM DRAIN	--- FT=0.00 FINISH FLOOR	--- FT=0.00 FINISH FLOOR
--- POWER LINE / POWER POLE	--- POWER LINE / POWER POLE	--- C.O. INV. CLEANOUT INVERT ELEVATION	--- C.O. INV. CLEANOUT INVERT ELEVATION
--- TELEPHONE LINE	--- TELEPHONE LINE	--- 0.00 FLOW LINE	--- 0.00 FLOW LINE
--- FIRE HYDRANT	--- FIRE HYDRANT	--- 0.00 FINISH GRADE	--- 0.00 FINISH GRADE
--- WATER VALVE	--- WATER VALVE	--- 0.00 BACK OF SIDEWALK	--- 0.00 BACK OF SIDEWALK
--- METERS / PULL BOXES	--- METERS / PULL BOXES	--- 0.00 TOP OF CURB	--- 0.00 TOP OF CURB
--- REDUCER	--- REDUCER	--- 0.00 TOP OF WALL	--- 0.00 TOP OF WALL
--- MANHOLE	--- MANHOLE	--- 0.00 A.C. PAVING	--- 0.00 A.C. PAVING
--- CLEANOUT	--- CLEANOUT	--- TYPE "L" CURB & GUTTER	--- TYPE "L" CURB & GUTTER
--- 0.00 CONTOUR	--- 0.00 CONTOUR	--- TYPE "A" CURB	--- TYPE "A" CURB
--- STREET LIGHTS	--- STREET LIGHTS	--- CONCRETE	--- CONCRETE
--- 100 W.H.P.S.	--- 100 W.H.P.S.		
--- 150 W.H.P.S.	--- 150 W.H.P.S.		
--- 200 W.H.P.S.	--- 200 W.H.P.S.		
--- 250 W.H.P.S.	--- 250 W.H.P.S.		

AVOID CUTTING UNDERGROUND UTILITY LINES. IT'S COSTLY.
Call before you Dig-
1-800-227-2600
UNDERGROUND SERVICE ALERT (U.S.A.)

AVOID OVERHEAD POWER LINE CONTACT
Call before you OVERHEAD
1-702-593-6111
NEVADA POWER ENVIRONMENT AND SAFETY SERVICES DEPARTMENT

MARTIN & MARTIN ASSUMES NO RESPONSIBILITY FOR EXISTING UTILITY LOCATIONS. THE UTILITIES SHOWN ON THIS DRAWING HAVE BEEN PLOTTED FROM THE BEST AVAILABLE INFORMATION. IT IS, HOWEVER THE CONTRACTORS RESPONSIBILITY TO FIELD VERIFY THE LOCATION OF ALL UTILITIES PRIOR TO THE COMMENCEMENT OF ANY CONSTRUCTION. CONTRACTOR TO FIELD VERIFY ALL EXISTING SITE CONDITIONS PRIOR TO CONSTRUCTION. IF A CONFLICT EXISTS BETWEEN WHAT IS SHOWN ON THESE DRAWINGS AND WHAT EXISTS IN THE FIELD, CONTRACTOR IS TO NOTIFY THE ARCHITECT OR ENGINEER IMMEDIATELY.

"TEXAS STATION"
ALLEN LANE
EXISTING TOPO

no	description of revisions	date	name

date	8-27-99	job number	1772.00
design by	D. LEMONE	drawn by	J. MARTINEZ
checked by	J. ENTSMINGER P.E.		

sheet number

C3