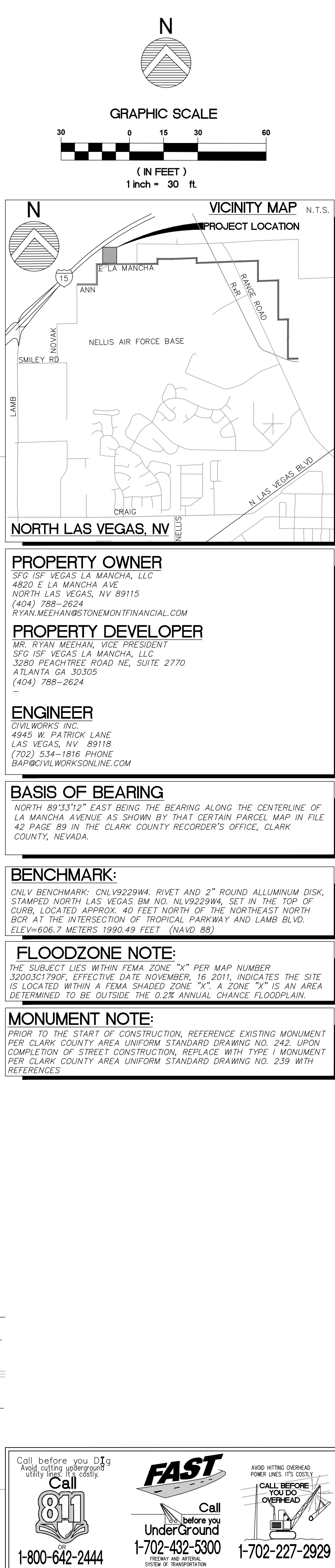
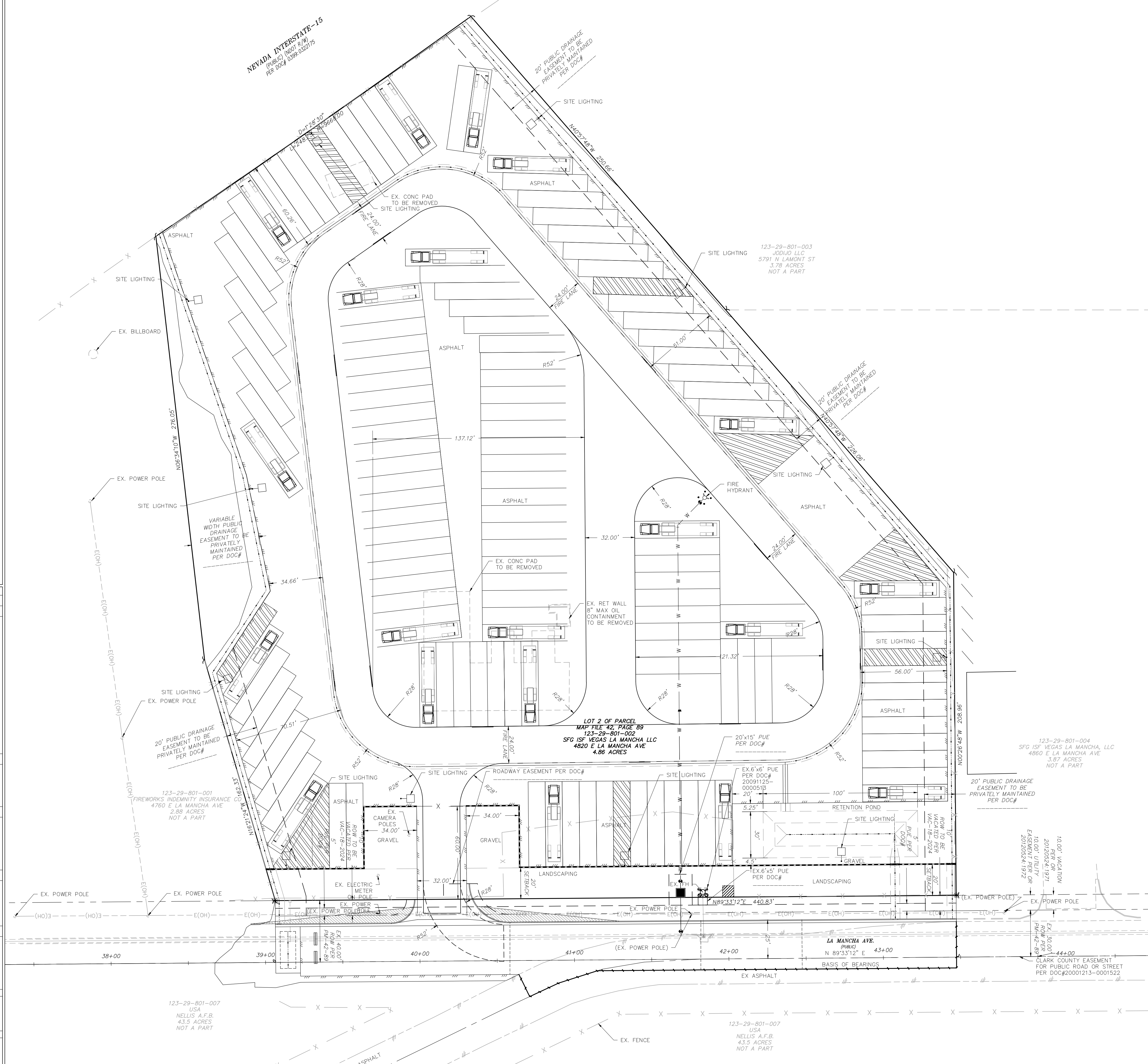



ABBREVIATIONS	
(SEE CVR. SHT. FOR COMPLETE LIST)	
AC	ASPHALTIC CONCRETE
ADJ	ADJUST
AGG	AGGREGATE
BC	BACK OF CURB
BCR	BEGINNING OF CURB RETURN
BEG	BEGINNING
BSW	BACK OF SIDEWALK
BVC	BEGINNING OF VERTICAL CURVE
CATV	CABLE TV
CAUSAD	CLARK COUNTY AREA
	UNIFORM STANDARD DRAWING
CPWP	CLARK COUNTY PUBLIC WORKS
CRCP	CONCRETE REGIONAL FLOOD CONTROL DISTRICT CENTERLINE
CLV	CORNER OF LAS VEGAS
CMU	CONCRETE MASONRY UNIT
CON	CLEAN OUT
COMM	COMMUNICATIONS
CONC	CONCRETE
COND	CONDUIT
CULV	CULVERT
DIC	DEPRESSED CURB
DM	DECOMPOSED GRANITE
DIP	DUCTILE IRON PIPE
DOM	DOMESTIC
ELC	ELECTRIC
ECR	END OF CURVE
ECR	END OF CURB RETURN
EG	EXISTING GRADE
ELEV	ELEVATION
EP	EDGE OF PAVEMENT
EV	END OF VERTICAL CURVE
EXIST	EXISTING
FAST	FEEDWAY & ARTERIAL SYSTEM OF TRANSPORTATION
FF	FINISH FLOOR
FG	FINISH GRADE
FL	FLOW LINE
FL	FLOW LINE
FO	FIBER OPTICS
FS	FINISHED SURFACE
GR	GRADE
HDPE	HIGH DENSITY POLYETHYLENE
HDWL	HEADWALL
HGL	HYDRAULIC GRADE LINE
HP	HIGH POINT
INR	INVERT
IRR	IRRIGATION
LAT	LATERAL
LF	LINEAL FEET
LS	LANDSCAPE
LT	LEFT
LVVWD	LAS VEGAS VALLEY WATER DISTRICT
MAX	MAXIMUM
MH	MANHOLE
MIN	MINIMUM
MTR	METER
PL	PULL BOX
PB	PROPERTY LINE
PP	POWER POLE
PROP	PROPOSED
PVC	POLY VINYL CHLORIDE PIPE
PVMT	PAVEMENT
RM	RIGHT OF WAY
ROW	RIGHT-OF-WAY
SS	SANITARY SEWER
ST	STORM DRAIN
SNWA	SOUTHERN NEVADA WATER AUTHORITY
STA	STATION
STL	STREET LIGHT
SVZ	SIGHT VISIBILITY ZONE
SW	SIDEWALK
TEL	TELEPHONE
TC	TOP OF CURB
TF	TOP OF FOOTING
TOE	TOE OF TERRAIN FEATURE
TW	TOP OF WALL
TYP	TYPICAL
UDACS	UNIFORM DESIGN AND CONSTRUCTION STANDARDS
VG	VARIABLE GUTTER
WL	WATER LINE



<h1 style="margin: 0;">SITE PLAN</h1>			
<p>PRINTS REQUIRE ENGINEER'S SEAL AND SIGN FOR PROOF OF VALIDITY</p>		<p>1/21/25</p>	
<p>DIGITAL SIGNATURE:</p>		<p>1/21/25</p>	
<p>STONEMONT FINANCIAL LOT</p>		<p>4820 E LA MANCHA AVE</p>	
<p>APN: 123-29-801-002</p>		<p>NORTH LAS VEGAS, NV 89115</p>	
<p>DEVELOPER: SFG ISF VEGAS LA MANCHA, LLC</p>		<p>3280 PEACHTREE ROAD NE, SUITE 2770</p>	
<p>ATLANTA, GA 30305</p>		<p>CONTACT: MR. RYAN MEEHAN, VICE PRESIDENT</p>	
<p>PHONE: (404) 788-2624</p>		<p>EMAIL: —</p>	