



Division Report

# CONSERVATION





# DROUGHT UPDATE

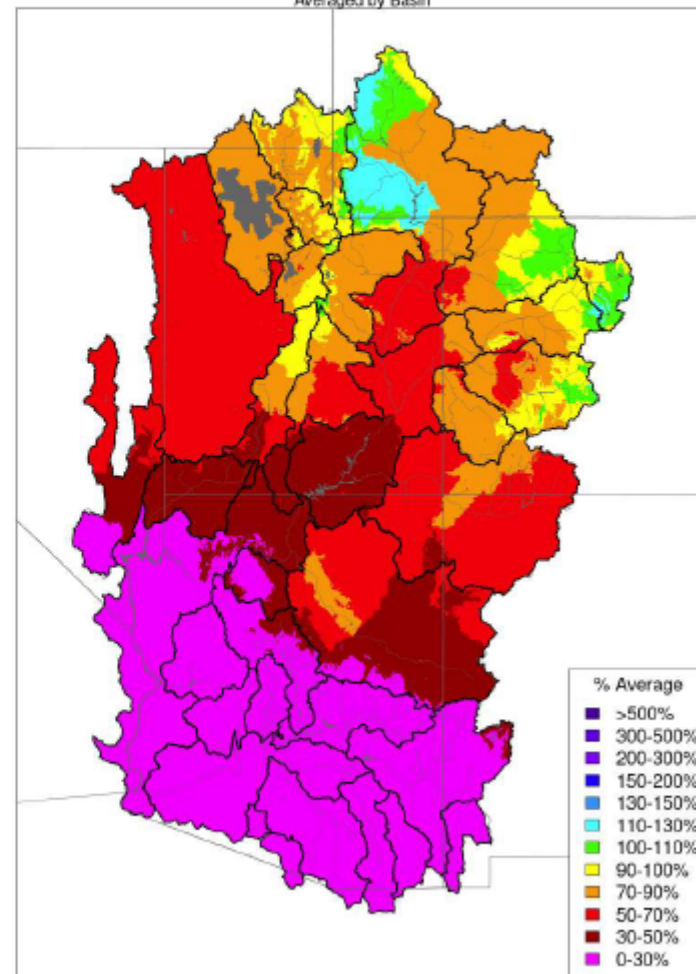
Information provided by the  
Southern Nevada Water Authority.



# COLORADO RIVER BASIN CONDITIONS

- **February Observed Inflow to Lake Powell:** 84% of average
- **Water Year 2025 Precipitation:** 93% of average
- **Current Basin Snowpack:** 91% of average
- **Forecasted Water Year 2025 Inflow to Lake Powell:** 71% of average

Water Year Precipitation, October 2024 - February 2025  
Averaged by Basin



Prepared by NOAA, Colorado Basin River Forecast Center  
Salt Lake City, Utah, [www.cbrfc.noaa.gov](http://www.cbrfc.noaa.gov)

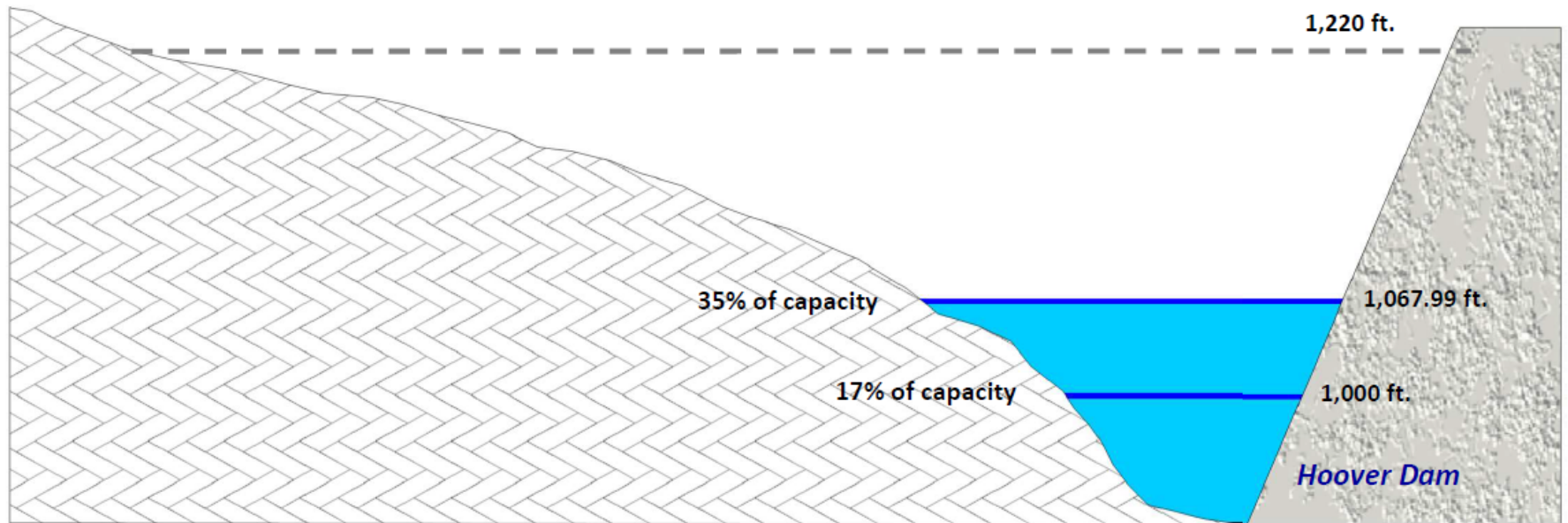
## RESERVOIR STATUS (Reported 3/10/2025)

Reservoir	Percent Full	Content (1,000 acre-feet)	Elevation
Lake Powell	34%	7,906	3,561.68
Lake Mead	35%	9,041	1,067.99
Total System Content	41%	24,107	

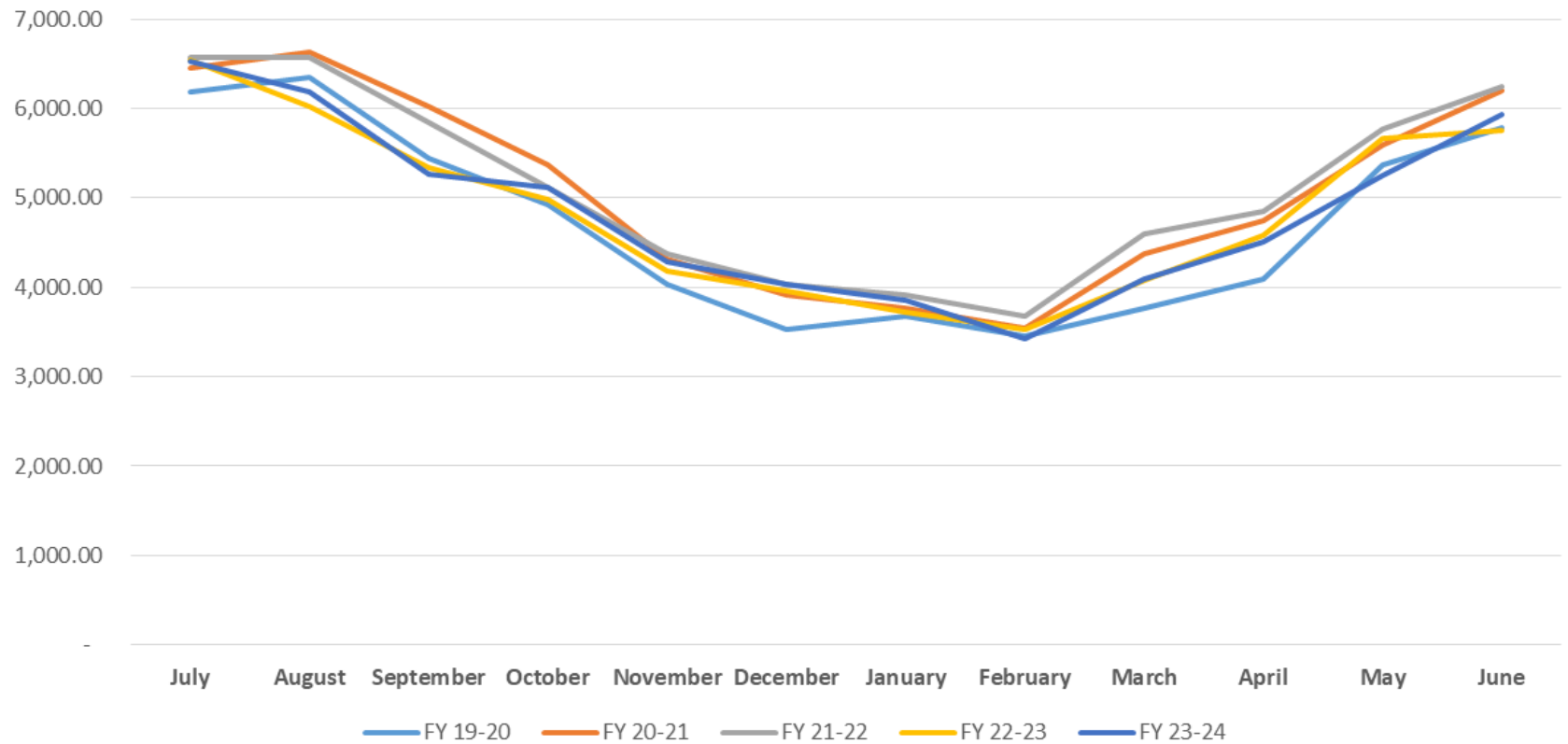
System content last year: 42% (24,794 \* 1,000 acre-feet)



# LAKE MEAD ELEVATION (Reported 3/10/2025)



## Wholesale Water Purchased from SNWA





# DIVISION IMPROVEMENTS



**Grant Funded  
Incentives**

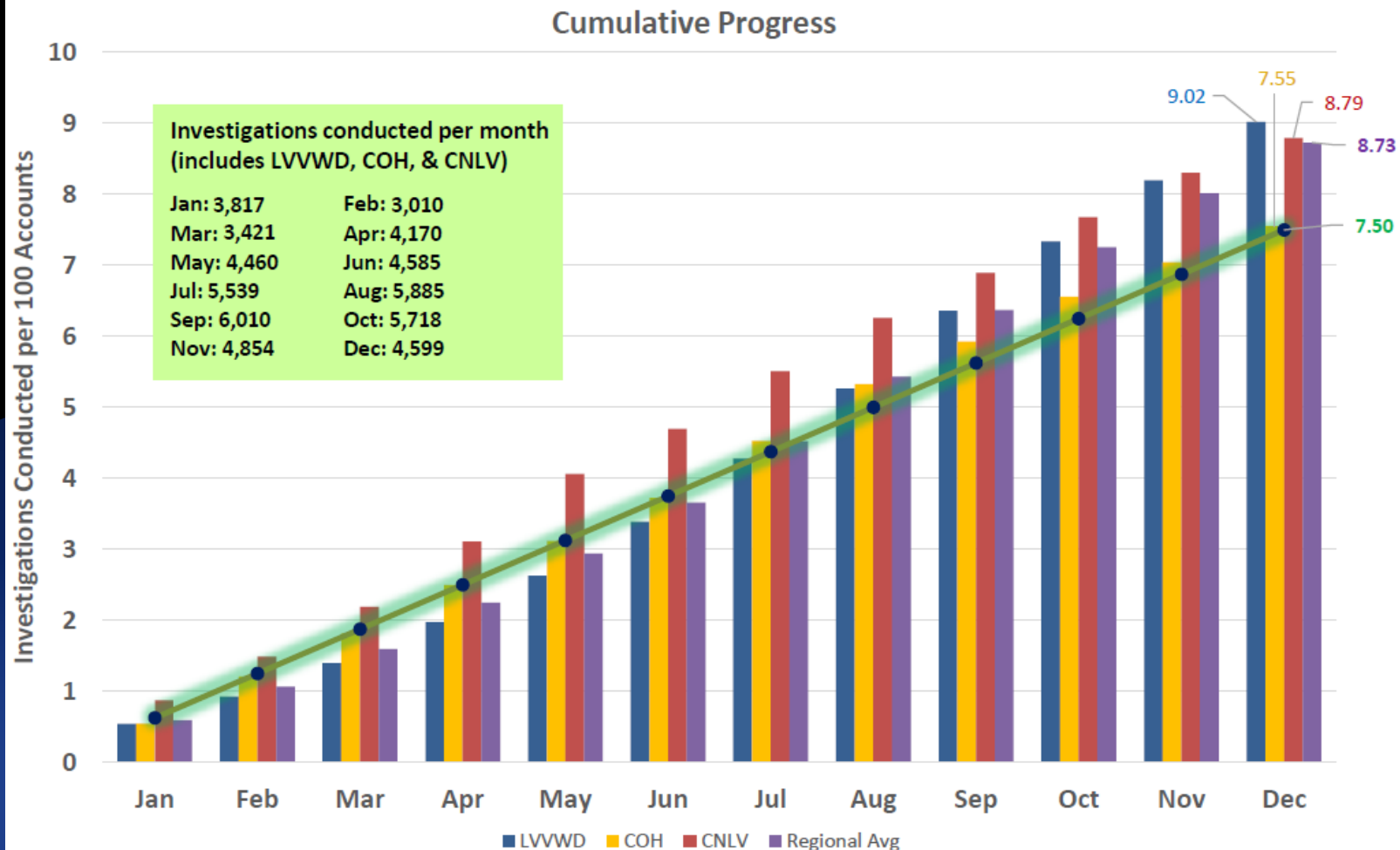


**Increased  
Technology**



**Investing in  
Staff Training**

# Water Use Compliance Investigations







# CONNECT WITH US



(702) 633-1216



[Conservation@cityofnorthlasvegas.com](mailto:Conservation@cityofnorthlasvegas.com)



[www.cityofnorthlasvegas.com](http://www.cityofnorthlasvegas.com)

