



Swivel Commercial Interiors, LLC
2146 Silvered Bark Dr. Las Vegas, NV 89135

Quote No.: 1018
Date: 2/11/2025
Page: 1 of 19

To: City of North Las Vegas
2250 Las Vegas Blvd N
North Las Vegas, NV 89030
Contact: Marie Leake
702-633-2440
_leakem@cityofnorthlasvegas.com

Ship to: DHRC
1737 Hunkins Drive
North Las Vegas, NV 89030
Contact: Margarita Mora
725-270-4171
moram@cityofnorthlasvegas.com

Account Manager: Deby Weintz
702-945-8343
dweintz@swivelcommercial.com

Thank you for the opportunity to provide this quote. Please review our service agreement and the following terms and conditions:

This quote is valid for 17 days.

All prices except for Smith Systems are under Sourcewell Contract #091423-FELL, NCPA Omnia Contract #07-73, and SPA 23-SOURCE.

This proposal is based on the information provided to Swivel Commercial Interiors, LLC at the time of quotation. Due to the ongoing nature of project developments, this quote is subject to final review and audit. Any omissions, modifications, or additional items required to meet project specifications, discovered upon final review, will be addressed through a revised proposal or change order, which must be reviewed and authorized by the client before proceeding. Pricing and lead times are subject to adjustment accordingly.

Swivel Commercial Interiors, LLC does not perform electrical or data work, and any required power or network provisions must be completed by the client's designated contractor prior to installation.

This quote covers comprehensive delivery and installation during our standard business hours: Monday through Friday, 8:00 a.m. to 4:00 p.m. If you require installation outside of these hours, kindly inform us so that we can provide an accurate quote.

Due to the customized nature of our products, once an order is placed, it is considered final, and we are unable to accommodate any changes, cancellations, or returns.

RECEPTION												
Line No.	Manufacturer	Catalogue	Part Number	Qty	General Markings	Ind. Tag	Options	Description	List Price	User Discount	User Price	Subtotal
1	Fellowes, Contract Interiors	ESI	TROUGH-DLX-KIT	1	01_RECEPTION	TROUGH-DLX-KIT	BLK	2-4"W x 18"L Deluxe Cord Management Troughs, Quick Install Adhesive, Guide Channels for Wires Black	\$48.00	53.00%	\$22.56	\$22.56
2	Steelcase	AQ3	AMQTSAE9869B	1	01_RECEPTION	BPI		Base Power In 3 Circuit	\$347.00	49.83%	\$174.09	\$174.09

Edge Finish Group		PLASTIC - PG1	
Edge Finish		6053: SEAGULL	
		RECEPTION SUBTOTAL	
		\$5,388.20	

SEATING AREA/AWAITING AREA												
Line No.	Manufacturer	Catalogue	Part Number	Qty	General Markings	Ind. Tag	Options	Description	List Price	User Discount	User Price	Subtotal
21	9605 Seating	925	1910-A00-GT-UP	16	02_SEATING AREA/AWAITING AREA	1910-A00-GT-UP	CAVO-FRAMECOLORS-1	Cavo - Upholstered Back & Seat Guest Stacking	\$533.00	46.00%	\$287.82	\$4,605.12
							Frame Colors					
							BF	Black				
							CAVO-LEG-OPTION-UP-A00	Leg Option Type Selection				
							GLIDE	Glides				
							TPG	Tapered Plastic Glide				
							G21B	BLACK				
							FABGRDS-CAVO	Fabric Grade Selection				
							GRADE-B	Fabric Grade B				
							BYTE	Byte				
							PEWTER	Pewter				
							CavoClip	Ganging Clip				
							NS	No Ganging Clip				
22	9605 Seating	925	1910-A55-GT-UP	22	02_SEATING AREA/AWAITING AREA	1910-A55-GT-UP	CAVO-ARM-A55-B	Cavo - Upholstered Back & Seat Guest Stacking	\$653.00	46.00%	\$352.62	\$7,757.64
							Arm Selection					
							A55B	A55B Black				
							CAVO-FRAMECOLORS-1	Frame Colors				
							BF	Black				
							CAVO-LEG-OPTION-UP-A55	Leg Option Type Selection				
							GLIDE	Glides				
							TPG	Tapered Plastic Glide				
							G21B	BLACK				
							FABGRDS-CAVO	Fabric Grade Selection				
							GRADE-B	Fabric Grade B				
							BYTE	Byte				
							PEWTER	Pewter				
							CavoClip	Ganging Clip				

23	Stedcase	AQ3	EMWDRDTBL	4	02_SEATING AREA	AWAITING	36/28.5	Diameter	Working-Height Round	\$1,254.00	55.20%	\$561.79	\$2,247.11
24	Stedcase	SM1	55003	2	02_SEATING AREA	AWAITING	FLOWFORM	Base Finish	4798: PLATINUM METALLIC	\$1,666.00	25.00%	\$1249.50	\$2,499.00
25	Stedcase	SM1	55009	3	02_SEATING AREA	AWAITING	FLOWFORM	Surface Finish Group	Hexagon Ottoman	\$689.00	25.00%	\$516.75	\$1,550.25
26	Stedcase	SM1	55001	1	02_SEATING AREA	AWAITING	FLOWFORM	Surface Finish	SMDT:MEDITERRANEAN	\$843.00	25.00%	\$632.25	\$632.25
27	Stedcase	SM1	55010	3	02_SEATING AREA	AWAITING	FLOWFORM	Surface Finish Group	SINGLE SEAT	\$1,338.00	25.00%	\$1003.50	\$3,010.50
SEATING/WAITING AREA SUBTOTAL													\$22,301.93

HELP DESK												
Line No.	Manufacturer	Catalogue	Part Number	Qty	General Markings	Ind. Tag	Options	Description	List Price	User Discount	User Price	Subtotal
28	Fellowes, Contract Interiors	ESI	TROUGH-DLX-KIT	8	03_HELP DESK	TROUGH-DLX-KIT	BLK	2-4"W x 18"L Deluxe Cord Management Troughs, Quick Install Adhesive, Guide Channels for Wires Black	\$48.00	53.00%	\$22.56	\$180.48
29	Steelcase	AQ3	AMQTSAE98669B	3	03_HELP DESK	BPI		Base Power In 3 Circuit	\$347.00	49.83%	\$174.09	\$522.27
							Wiring	Shared Powerway Wiring				
30	Steelcase	AQ3	AMQTSATRC	8	03_HELP DESK	RC/48		Channel- Reinforcing	\$64.00	54.75%	\$28.96	\$231.68
							Width	48				
31	Steelcase	AQ3	AMQCRD5HL	8	03_HELP DESK	30/60		Desk, Shell	\$827.00	55.20%	\$370.50	\$2,963.97
							Depth	30,0000				
							Width	60,0000				
							Case Finish Group	Solid LPL				
							Case Finish	2L83, SEAGULL LPL				

				Top Surface Finish Group	Solid LPL		
32	Steelcase	AQ3	FLXCHAIR	16	03_HELP DESK	FL-X	2L83: SEAGULL LPL
							PLASTIC - PG1
							6053: SEAGULL
							Full Depth End Panel
							Full Depth End Panel
							Modesty Panel
							Full
							Thickness - Worksurface
							1.125
							FL-X-CHAIR
33	Steelcase	AQ3	AMQTSAPF	40	03_HELP DESK	30/54m	White Frame, Light Grey Back
							Shell Back
							Elements
							G1EL03:Slate
							Standard
							Knocked Down
							Panel Tackable Monolithic
							\$595.00
							49.83%
							\$293.49
34	Steelcase	AQ3	AMQTSAPF	10	03_HELP DESK	30/54m	\$11,739.78
							Width
							30
							Height
							54
							Trim Finish Group
							Smooth Metallic
							4799: PLATINUM METALLIC
							Surface 1 Finish Group
							Alloy
34	Steelcase	AQ3	AMQTSAPF	10	03_HELP DESK	30/54m	Alloy
							P531: SILVER
							Surface 1 Finish
							Surface 2 Finish Group
							Alloy
							Surface 2 Finish
							P531: SILVER
							Top Cap
							Low
							HORIZONTAL APPLICATION ONLY
34	Steelcase	AQ3	AMQTSAPF	10	03_HELP DESK	30/54m	Fabric Direction
							Power Install
							Factory Installation
							Powerway
							No Powerway
							Panel Tackable Monolithic
							\$757.00
							49.83%
							\$379.79
							\$3,797.87
34	Steelcase	AQ3	AMQTSAPF	10	03_HELP DESK	30/54m	Width
							30
							Height
							54
							Trim Finish Group
							Smooth Metallic
							4799: PLATINUM METALLIC
							Surface 1 Finish Group
							Alloy

Seat Finish Group				Buzz2						
Seat Finish				5G63CROCUS						
Frame				Black Frame, Black Back						
Back Finish Group				Air Mesh						
Back Finish				AR13:AUBERGINE						
Caster or Glide				Soft Castors						
Headrest				No Headrest						
Armrest				4-D Arm						
Base				F3:Black Base						
Packaging				Knocked Down						
38	Steelcase	AQ3	AMQTSAESB	2	03_HELP DESK	Receptacle 3 Circuit Shared Neutral Line 3 15 Amp Package Quantity 6	\$286.00	49.83%	\$143.49	\$286.97
Harness				Shared Harness						
Receptacle				Line 1						
Controlled Stamp				No Stamp						
39	Steelcase	AQ3	AMQTSAESB	2	03_HELP DESK	Receptacle 3 Circuit Shared Neutral Line 3 15 Amp Package Quantity 6	\$286.00	49.83%	\$143.49	\$286.97
Harness				Shared Harness						
Receptacle				Line 2						
Controlled Stamp				No Stamp						
40	Steelcase	AQ3	AMQTSAPTC	16	03_HELP DESK	J54 Trim Vertical Corner	\$112.00	49.83%	\$56.19	\$899.05
Height				54						
Trim Finish Group				Smooth Metallic						
Trim Finish				4799: PLATINUM METALLIC						
End Cap				Low						
41	Steelcase	AQ3	AMQTSAPTE	13	03_HELP DESK	E54 Trim Vertical End of run	\$82.00	49.83%	\$41.14	\$534.81
Height				54						
Trim Finish Group				Smooth Metallic						
Trim Finish				4799: PLATINUM METALLIC						
End Cap				Low						
HELP DESK SUBTOTAL										\$37,791.20

PRIVATE OFFICE 1												
Line No.	Manufacturer	Catalogue	Part Number	Qty	General Markings	Ind. Tag	Options	Description	List Price	User Discount	User Price	Subtotal
42	Steelcase	AQ3	PPCHAIR	1	04_PRIVATE OFFICE	PP		Personality Plus Task	\$786.00	54.75%	\$355.67	\$355.67

5G63:CROCUS
Black Frame, Black Back
Air Mesh
Back Finish Group
AR13:AUBERGINE
Caster or Glide
Soft Castors
Headrest
No Headrest
Armrest
4-D Arm
Base
F3:Black Base
Packaging
Knocked Down
PRIVATE OFFICE 1 SUBTOTAL
\$355.67

PRIVATE OFFICE 2

Line No.	Manufacturer	Catalogue	Part Number	Qty	General Markings	Ind. Tag	Options	Description	List Price	User Discount	User Price	Subtotal
43	Fellowes, Contract Interiors	ESI	TROUGH-DLX-KIT	1	05_PRIVATE OFFICE 2	TROUGH-DLX-KIT	BLK	2-4"W x 18"L Deluxe Cord Management Troughs, Quick Install Adhesive, Guide Channels for Wires	\$48.00	53.00%	\$22.56	\$22.56
44	Steelcase	AQ3	AMQTSATRC	1	05_PRIVATE OFFICE 2	RC/48	Width	Channel-Reinforcing	\$64.00	54.75%	\$28.96	\$28.96
45	Steelcase	AQ3	AMQCRDSHL	1	05_PRIVATE OFFICE 2	30/60	Depth	Desk, Shell	\$827.00	55.20%	\$370.50	\$370.50
							Width	30.0000				
							Width	60.0000				
							Case Finish Group	Solid LPL				
							Case Finish	2L83: SEAGULL LPL				
							Top Surface Finish Group	Solid LPL				
							Top Surface Finish	2L83: SEAGULL LPL				
							Edge Finish Group	PLASTIC - PG1				
							Edge Finish	6053: SEAGULL				
							Support - Right	Full Depth End Panel				
							Support - Left	Full Depth End Panel				
							Modesty Panel	Full				
							Thickness - Worksurface	1.125				
46	Steelcase	AQ3	PPCHAIR	1	05_PRIVATE OFFICE 2	PP		Personality Plus Task	\$786.00	54.75%	\$355.67	\$355.67
							Seat Finish Group	Buzz2				
							Seat Finish	5G63:CROCUS				
							Frame	Black Frame, Black Back				

51	Steelcase	AQ3	AMQCRDShL	1	06_PRIVATE OFFICE 3	Width		57	Desk, Shell	\$897.00	55.20%	\$401.86	\$401.86
						30/7 2	Depth						
52	Steelcase	AQ3	PPCHAIR	1	06_PRIVATE OFFICE 3	PP	Width	1,125	Personality Plus Task	\$766.00	54.75%	\$355.67	\$355.67
							Depth						
							Width						
							Case Finish Group						
							Case Finish						
							Top Surface Finish Group						
							Top Surface Finish						
							Edge Finish Group						
							Edge Finish						
							Support - Right						
53	Steelcase	AQ3	AMQCRRTNL	1	06_PRIVATE OFFICE 3	24/4 2	Support - Left	1,125	Personality Plus Task	\$766.00	54.75%	\$355.67	\$355.67
							Full Depth End Panel						
							Modesty Panel						
							Thickness - Worksurface						
							Seat Finish Group						
							Seat Finish						
							Frame						
							Back Finish Group						
							Back Finish						
							Caster or Glide						
54	Steelcase	AQ3	AMQCRRTNL	1	06_PRIVATE OFFICE 3	24/4 2	Headrest	1,125	Personality Plus Task	\$766.00	54.75%	\$355.67	\$355.67
							No Headrest						
							Armrest						
							4-D Arm						
							Base						
							F3:Black Base						
							Packaging						
							Knocked Down						
							Return Shell, Left Hand						
							Depth						
55	Steelcase	AQ3	AMQCRRTNL	1	06_PRIVATE OFFICE 3	24/4 2	Width	1,125	Personality Plus Task	\$766.00	54.75%	\$355.67	\$355.67
							Depth						
							Width						
							Case Finish Group						
							Solid LPL						
							Case Finish						
							2L83: SEAGULL LPL						
							Top Surface Finish Group						
							Solid LPL						
							Top Surface Finish						
56	Steelcase	AQ3	AMQCRRTNL	1	06_PRIVATE OFFICE 3	24/4 2	2L83: SEAGULL LPL	1,125	Personality Plus Task	\$766.00	54.75%	\$355.67	\$355.67
							PLASTIC - PG1						
							6053: SEAGULL						
							Full Depth End Panel						
							Full Depth End Panel						
							Modesty Panel						
							Thickness - Worksurface						
							Seat Finish Group						
							Seat Finish						
							Frame						
57	Steelcase	AQ3	AMQCRRTNL	1	06_PRIVATE OFFICE 3	24/4 2	Black Frame, Black Back	1,125	Personality Plus Task	\$766.00	54.75%	\$355.67	\$355.67
							Air Mesh						
							AR13:AUBERGINE						
							Soft Castors						
							No Headrest						
							4-D Arm						
							F3:Black Base						
							Knocked Down						
							Return Shell, Left Hand						
							Depth						
58	Steelcase	AQ3	AMQCRRTNL	1	06_PRIVATE OFFICE 3	24/4 2	42.0000	1,125	Personality Plus Task	\$766.00	54.75%	\$355.67	\$355.67
							Width						
							Case Finish Group						
							Solid LPL						
							Case Finish						
							2L83: SEAGULL LPL						
							Top Surface Finish Group						
							Solid LPL						
							Top Surface Finish						
							2L83: SEAGULL LPL						
59	Steelcase	AQ3	AMQCRRTNL	1	06_PRIVATE OFFICE 3	24/4 2	PLASTIC - PG1	1,125	Personality Plus Task	\$766.00	54.75%	\$355.67	\$355.67
							6053: SEAGULL						
							Full Depth End Panel						
							Full Depth End Panel						
							Modesty Panel						
							Thickness - Worksurface						
							Seat Finish Group						
							Seat Finish						
							Frame						
							Black Frame, Black Back						

		Handedness		Left Hand							
		Support - Left		Full Depth End Panel							
		Modesty Panel		Full							
		Thickness - Worksurface		1.125							
54	Steelcase	AQ3	AMQWESMDC4 WA	2	06_PRIVATE OFFICE 3	STERLING	Sterling 4 Wood Leg Guest Chair with Arms	\$1319.00	54.75%	\$596.85	\$1,193.70
		Color Scheme		Non Contrasting							
		Back Finish Group		BILLIARD							
		Back Finish		5H21:GUNMETAL							
		Seat Finish Group		BILLIARD							
		Seat Finish		5H21:GUNMETAL							
		Base Finish Group		Rift Cut/Low Sheen							
		Base Finish		VO03:BLACK OAK							
PRIVATE OFFICE 3 SUBTOTAL										\$2,994.17	

STAFF OFFICE

Line No.	Manufacturer	Catalogue	Part Number	Qty	General Markings	Ind. Tag	Options	Description	List Price	User Discount	User Price	Subtotal	
55	Steelcase	AQ3	3FSNLINEAR	3	07_STAFF OFFICE	PS/18/28	Width	28	AMQ 3F Screens Linear	\$166.00	54.75%	\$75.12	\$225.35
							Height	18					
							Screen Finish Group	Verve					
							Screen Finish	FC2: Shadow					
56	Steelcase	AQ3	3FSNTOPMOUNTBK T	3	07_STAFF OFFICE		Bracket Finish Group	Paint	AMQ 3F Screens Top Mount Bracket	\$76.00	54.75%	\$34.39	\$103.17
							Bracket Finish	F1: PLATINUM					
57	Steelcase	AQ3	KINXBENCH	3	07_STAFF OFFICE	29/54	Depth	30	AMQ Kinex Bench	\$1,417.00	54.75%	\$641.19	\$1,923.58
							Width	54					
							Worksurface Finish Group	Solid LPL					
							Worksurface Finish	2LB3: SEAGULL LPL					
							Base Finish Group	PAIN					
							Base Finish	F1: PLATINUM					
							Base	Fixed					
							Run	Single Run					
58	Steelcase	AQ3	KINXDBLJUNCTION BLK	3	07_STAFF OFFICE	JB		AMQ Kinex Double sided Junction Block	\$143.00	54.75%	\$64.71	\$194.12	

59	Steelcase	AQ3	PWRJUMPER	2	07_STAFF OFFICE	E3-42A	Circuit	3-Circuit	AMQ Power Adjustable Jumper Adapter	\$111.00	54.75%	\$50.23	\$100.46
							Width	42					
60	Steelcase	AQ3	PWRCRECEPTACLE	3	07_STAFF OFFICE		Circuit	3-Circuit	AMQ Power C Receptacle for Kinex	\$37.00	54.75%	\$16.74	\$50.23
							Receptacle Finish Group	Plastic					
							Receptacle Finish	G					
							Circuit	3-Circuit					
61	Steelcase	AQ3	PWRCRECEPTACLE	3	07_STAFF OFFICE		Receptacle	Line 1	AMQ Power C Receptacle for Kinex	\$37.00	54.75%	\$16.74	\$50.23
							Receptacle Finish Group	Plastic					
							Receptacle Finish	G					
							Circuit	3-Circuit					
62	Steelcase	AQ3	PWRENTY	1	07_STAFF OFFICE	E3-BF120	Receptacle	Line 2	AMQ Power Entry	\$254.00	54.75%	\$114.94	\$114.94
							Circuit	3-Circuit					
63	Steelcase	AQ3	FLXCHAIR	3	07_STAFF OFFICE	FL-X	Entry	Base Feed	FL-X-CHAIR	\$897.00	54.75%	\$405.89	\$1217.68
							Frame	White Frame, Light Grey Back					
							Back	Shell Back					
							Seat Cover Finish Group	Elements					
							Seat Cover Finish	G1EL03.Slate					
							Cylinder	Standard					
							Packaging	Knocked Down					
64	Steelcase	AQ3	PPCHAIR	3	07_STAFF OFFICE	PP		Personality Plus Task	Personality Plus Task	\$786.00	54.75%	\$355.67	\$1,067.00
							Seat Finish Group	Buzz2					
							Seat Finish Group	5G63.CROCUS					
							Frame	Black Frame, Black Back					
							Back Finish Group	Air Mesh					
							Back Finish Group	AR13.AUBERGINE					
							Caster or Glide	Soft Casters					
							Headrest	No Headrest					
							Armrest	4-D Arm					
							Base	F3.Black Base					

Packaging	Knocked Down	STAFF OFFICE SUBTOTAL	\$5,046.73
-----------	--------------	-----------------------	------------

PAIS WORKSTATION												
Line No.	Manufacturer	Catalogue	Part Number	Qty	General Markings	Ind. Tag	Options	Description	List Price	User Discount	User Price	Subtotal
65	Steelcase	AQ3	AMQCROHOP	1	08_PAIS WORKSTATION	OH/60/15	Width	15" H Overhead - No Doors, Open, Personal	\$1,073.00	55.20%	\$480.70	\$480.70
							60					
							Solid LPL					
							2L83: SEAGULL LPL					
							Personal					
							Storage	Personal				
							Door	No Door				
							Attachment Bracket	Wall Mount Brackets				
66	Steelcase	AQ3	AMQCROHOP	1	08_PAIS WORKSTATION	OH/66/15		15" H Overhead - No Doors, Open, Personal	\$1,194.00	55.20%	\$534.91	\$534.91
							Width	66				
							Case Finish Group	Solid LPL				
							Case Finish	2L83: SEAGULL LPL				
							Storage	Personal				
							Door	No Door				
							Attachment Bracket	Wall Mount Brackets				
67	Steelcase	AQ3	3FSNTOPIHNTCLAMPBKT	6	08_PAIS WORKSTATION		Bracket Finish Group	AMQ 3F Screens Top Mount Bracket Clamp, Set of 2	\$115.00	54.75%	\$52.04	\$312.23
							Bracket Finish	Paint				
							F1: PLATINUM					
							AMQ 3F Screens U Screen					
						Width	60					
						Height	18					
							Screen Finish Group	Verve				
							Screen Finish	FC2: Shadow				
							Mount	Top Mount				
68	Steelcase	AQ3	3FSNUSCREEN	2	08_PAIS WORKSTATION	PS/18/60		AMQ Kinex Bench	\$1,435.00	54.75%	\$649.34	\$1298.68
							Depth	30				
							Width	60				
							Worksurface Finish Group	Solid LPL				
							Worksurface Finish	2L83: SEAGULL LPL				
							Base Finish Group	PAINT				

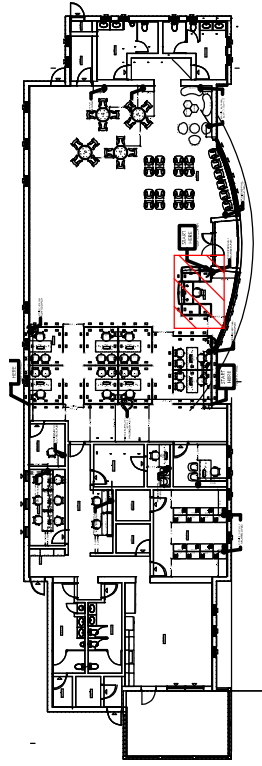
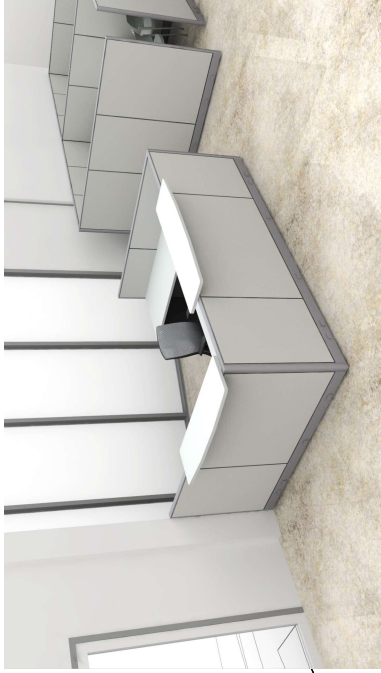
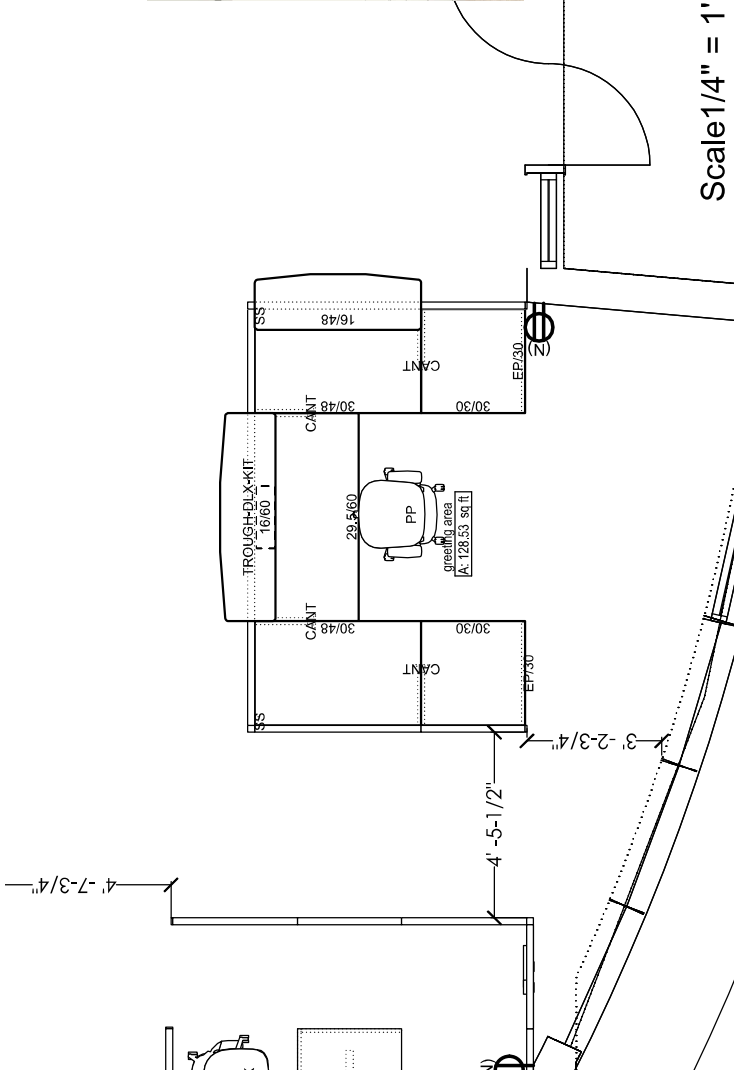
F1: PLATINUM									
Base Finish		Fixed							
Base		Run							
Single Run		3-Circuit							
Circuit		Width							
Width		3-Circuit							
Circuit		Line 1							
Receptacle		Line 2							
Receptacle		Base Feed							
Receptacle		Personality Plus Task							
Receptacle		Buzz2							
Receptacle		5G83CROCUS							
Receptacle		Black Frame, Black Back							
Receptacle		Air Mesh							
Receptacle		AR13AUBERGINE							
Receptacle		Soft Castors							
Receptacle		No Headrest							
Receptacle		4-D Arm							
Receptacle		F3Black Base							
Receptacle		Knocked Down							
Receptacle		PAIS WORKSTATION SUBTOTAL							
Receptacle		\$4,288.10							

COMPUTER LAB												
Line No.	Manufacturer	Catalogue	Part Number	Qty	General Markings	Ind. Tag	Options	Description	List Price	User Discount	User Price	Subtotal
76 Y Interiors	Fellowes, Contract	ESI	CPUMINI	16	09_COMPUTER LAB	CPUMINI		Easy Adjust CPU Holder	\$244.00	53.00%	\$114.68	\$1,834.88
77 Y	Steelcase	SM1	S01274	16	09_COMPUTER LAB	20/36		Planner Student Desk - Single Student, 20" Diameter x 36" Width x 22-32" Smith System Laminate	\$352.00	25.00%	\$264.00	\$4,224.00
							Worksurface Finish Group					
							Worksurface Finish	D9060: NORTH SEA GREY LAMINATE				
							Edge	1 1/4in Top w 3/8in Bmpr TMld				
							Edge Finish Group	Smith System T-Mold				
							Edge Finish	PRP: PURPLE T MOLD				
							Leg Finish Group	Smith System Paint				
							Leg Finish	BLK: BLACK				
COMPUTER LAB SUBTOTAL												\$6,058.88

STORAGE												
Line No.	Manufacturer	Catalogue	Part Number	Qty	General Markings	Ind. Tag	Options	Description	List Price	User Discount	User Price	Subtotal
78	Steelcase	AQ3	AMQCR4H	2	09_STORAGE	LF4/30		Lateral-Four-High-File/File/File/File	\$2,852.00	55.20%	\$1277.70	\$2,555.39
							Depth	18.875				
							Width	30				
							Top	With Top				
							Top Surface Finish Group	Solid LPL				
							Top Surface Finish	2L83: SEAGULL LPL				
							Edge Finish Group	PLASTIC - PG1				
							Edge Finish	6053: SEAGULL				
							Thickness - Worksurface	1.125				
							Case Finish Group	Solid LPL				
							Case Finish	2L83: SEAGULL LPL				
							Headset Finish Group	Solid LPL				
							Headset Finish	2L83: SEAGULL LPL				
							Lock Finish Group	Polished Chrome				
							Lock Finish	9201: POLISHED CHROME				
							Key	Key Plug				
							Pull	Ledge				
							Pull Finish Group	Smooth Metallic				
							Pull Finish	4799: PLATINUM METALLIC				

79	Steelcase	AQ3	AMQCRL4H	1	09_STORAGE	LF/4/36	Lateral-Four-High,File/File/File/File	\$ 2,945.00	55.20%	\$1319.36	\$1319.36
Depth 18.875											
Width 36											
Top With Top											
Top Surface Finish Group Solid LPL											
Top Surface Finish 2LB3; SEAGULL LPL											
Edge Finish Group PLASTIC - PG1											
Edge Finish 6093; SEAGULL											
Thickness - Worksurface 1.125											
Case Finish Group Solid LPL											
Case Finish 2LB3; SEAGULL LPL											
Headset Finish Group Solid LPL											
Headset Finish 2LB3; SEAGULL LPL											
Lock Finish Group Polished Chrome											
Lock Finish 9201; POLISHED CHROME											
Key Key Plug											
Pull Ledge											
Pull Finish Group Smooth Metallic											
Pull Finish 4799; PLATINUM METALLIC											
STORAGE SUBTOTAL										\$3,874.75	

OTHER SERVICES AND FEES												
Line No.	Vendor	Catalogue	Part Number	Qty	General Markings	Ind. Tag	Options	Description	List Price	User Discount	User Price	Subtotal
80	Fellowes; Contract Interiors	ESI		1				Freight	\$35.00	0.00%	\$35.00	\$35.00
81	9 to 5 Sealing	9 to 5		1				3% Tariff Surcharge	\$370.88	0.00%	\$370.88	\$370.88
82	Swivel Commercial Interiors	SWC		12				Space planning and audit services	\$95.00	0.00%	\$95.00	\$1,140.00
83	Swivel Commercial Interiors	SWC		1			(Budgetary)	Receipt, Delivery and Installation	\$15,800.00	0.00%	\$15800.00	\$15,800.00
Furniture Subtotal											\$90,071.00	
Other Services											\$17,345.88	
Taxes											\$0.00	
TOTAL											\$107,416.88	



KEY PLAN

DHRC

1737 HUNKINS DR., NORTH LAS VEGAS 89030

DATE: 02/11/2025

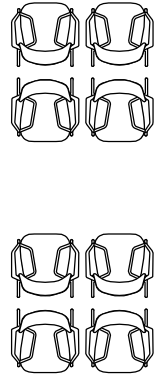
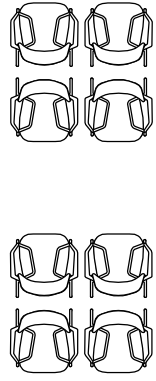
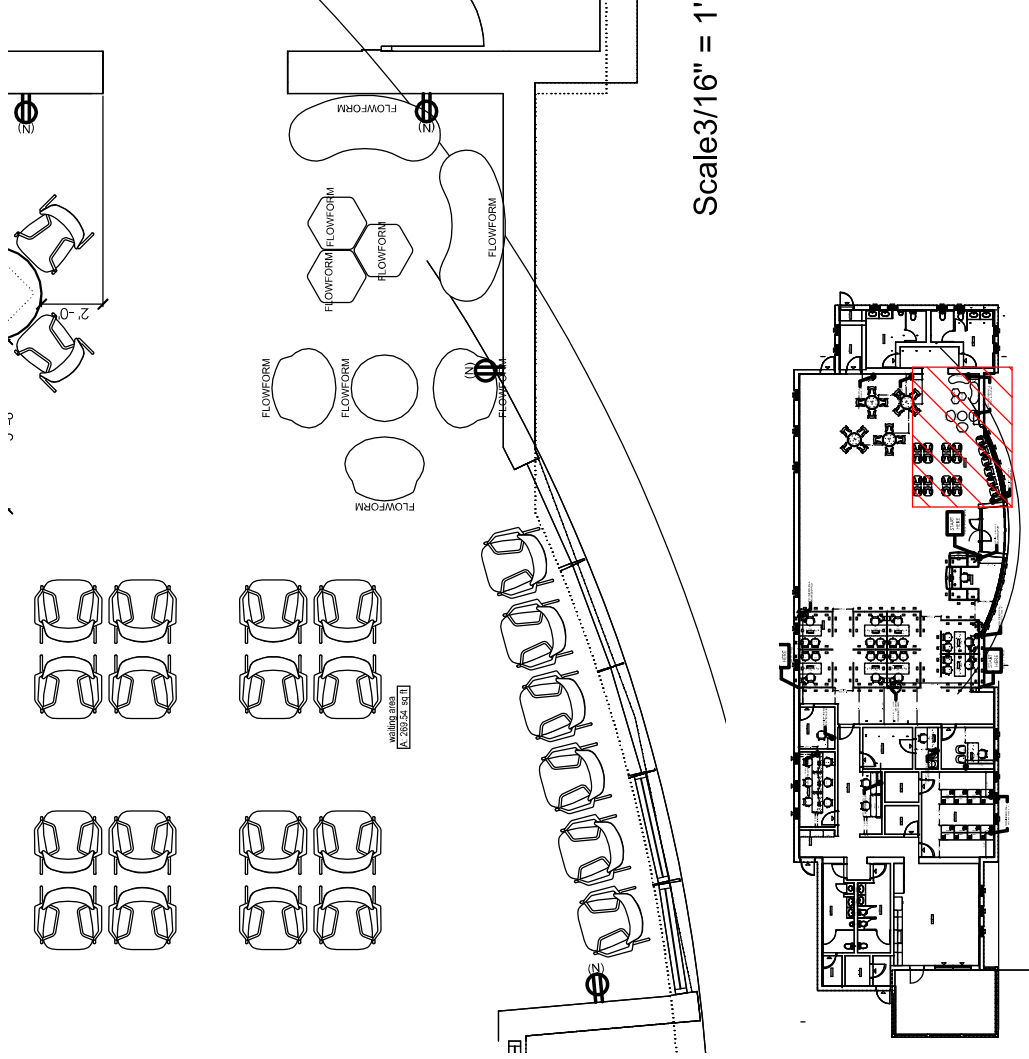
REVISIONS:
01 | XX/XX/XXXX

SCALE: 1/4" = 1' - 0"

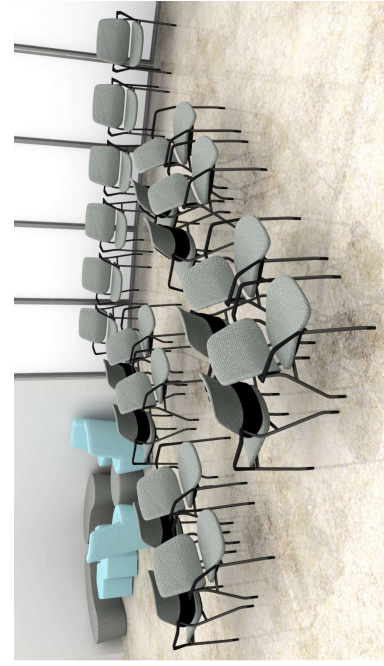
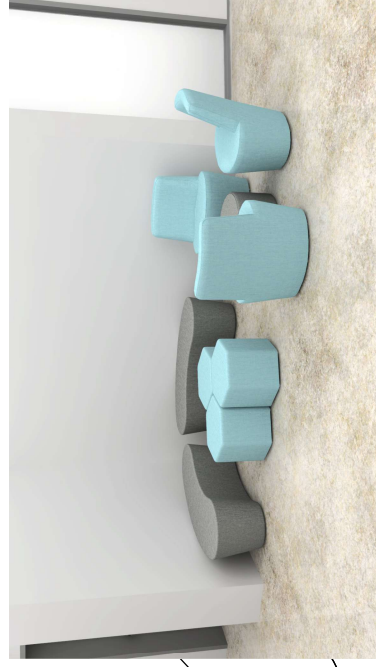
F1
DRAWING NO: 01 OF 12

ACCOUNT MANAGER: DW

SWIVEL
COMMERCIAL INTERIORS



SEATING
A-2022-011



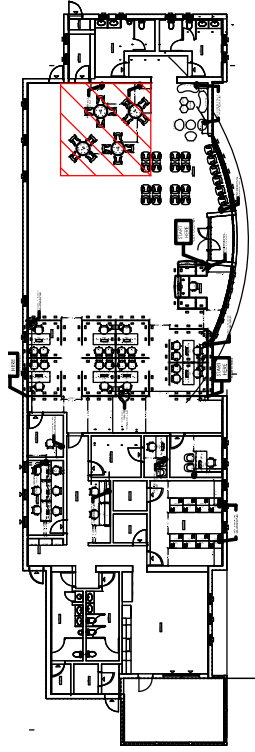
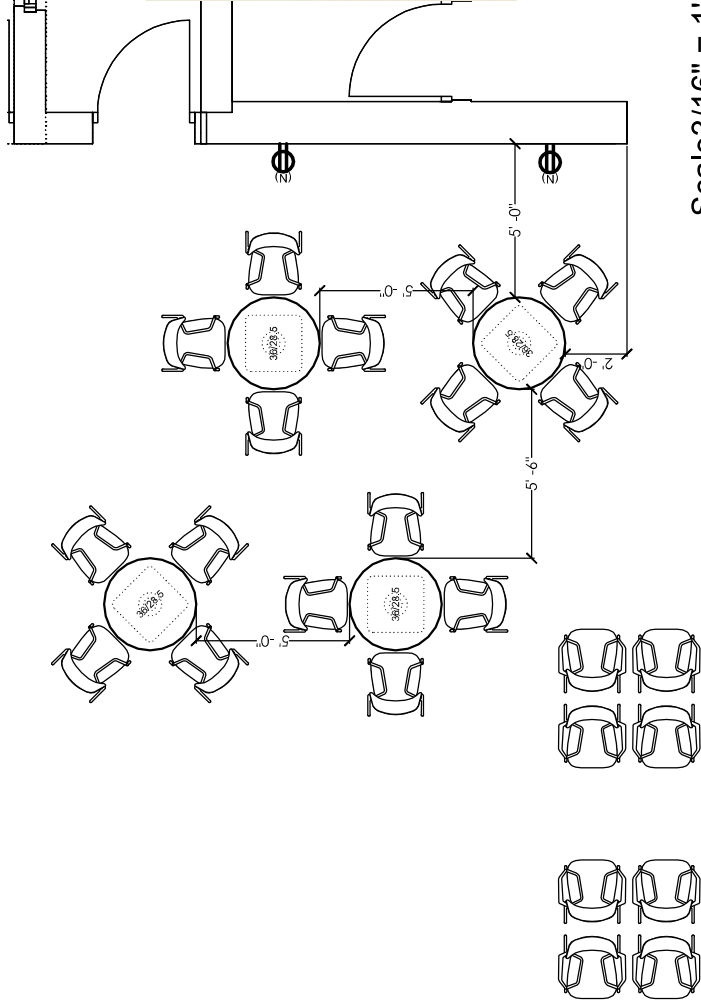
KEY PLAN

DHRC

1737 HUNKINS DR., NORTH LAS VEGAS 89030

DATE: 02/11/2025	REVISIONS:	SCALE:	1/4" = 1' - 0"
ACCOUNT MANAGER: DW	01 XX/XX/XXXX	DRAWING NO:	F1
			02 OF 12

SWIVEL
COMMERCIAL INTERIORS



KEY PLAN

DHRC

1737 HUNKINS DR., NORTH LAS VEGAS 89030

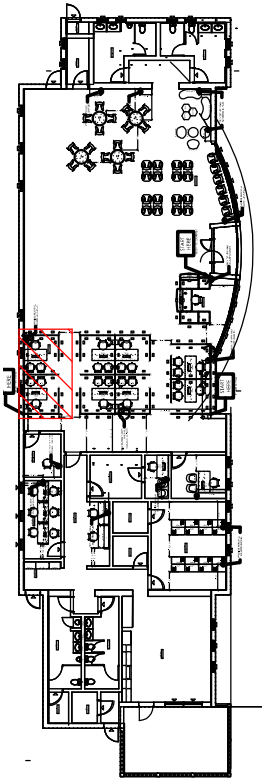
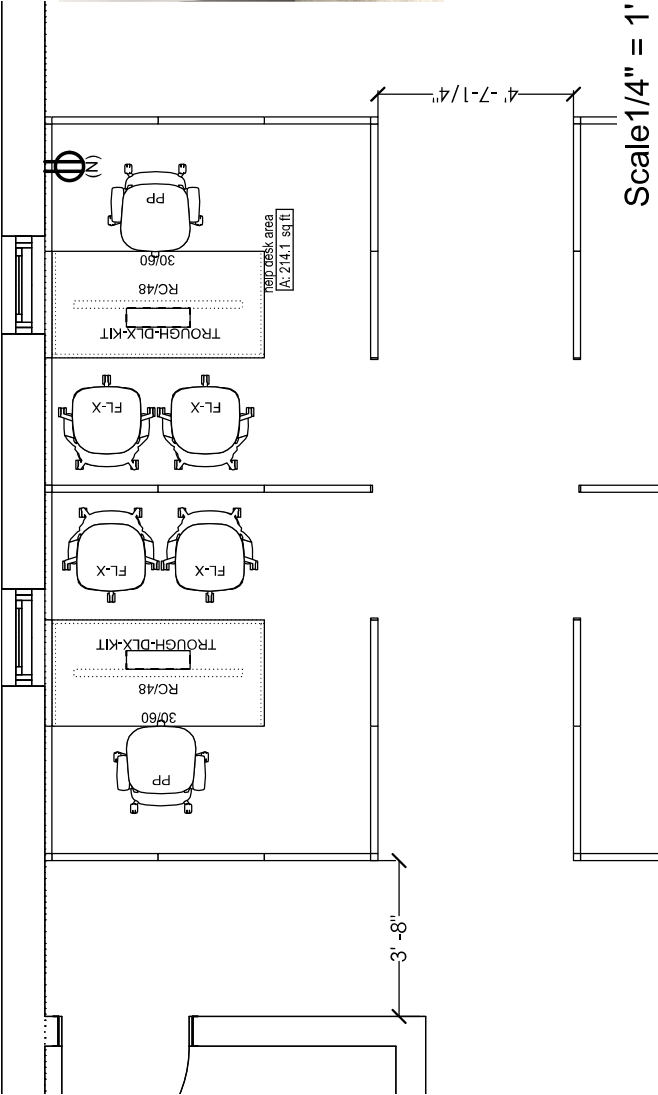
DATE: 02/11/2025

ACCOUNT MANAGER: DW

REVISIONS:
01 | XXXXX/XXX

SCALE: 1/4" = 1' - 0"
F1
DRAWING NO: 03 OF 12

SWIVEL
COMMERCIAL INTERIORS



KEY PLAN

DHRC

1737 HUNKINS DR., NORTH LAS VEGAS 89030

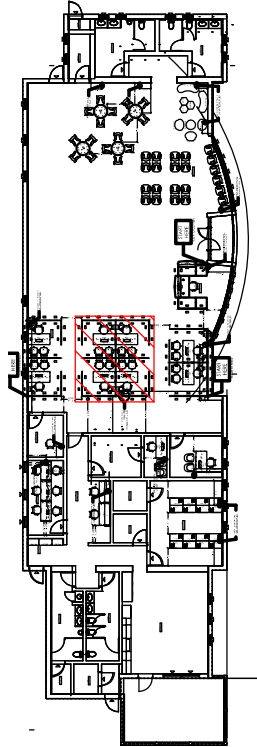
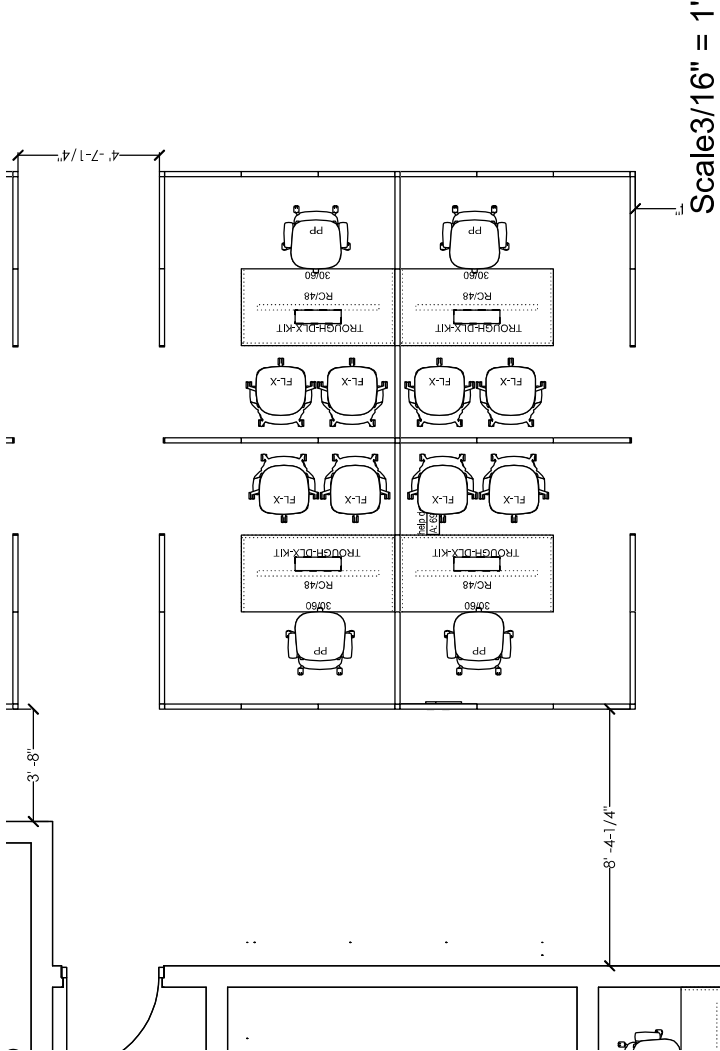
DATE: 02/11/2025

ACCOUNT MANAGER: DW

REVISIONS:
01 | XXXXX/XXXX

SCALE: 1/4" = 1' - 0"
F1
DRAWING NO: 04 OF 12

SWIVEL
COMMERCIAL INTERIORS

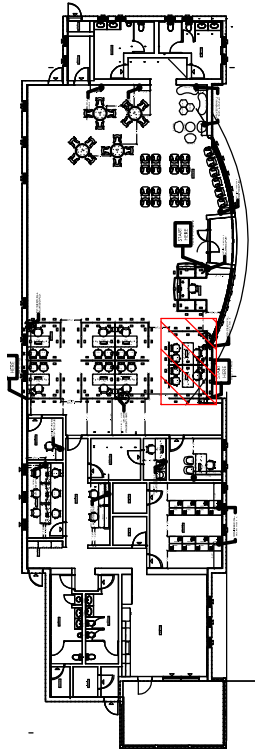
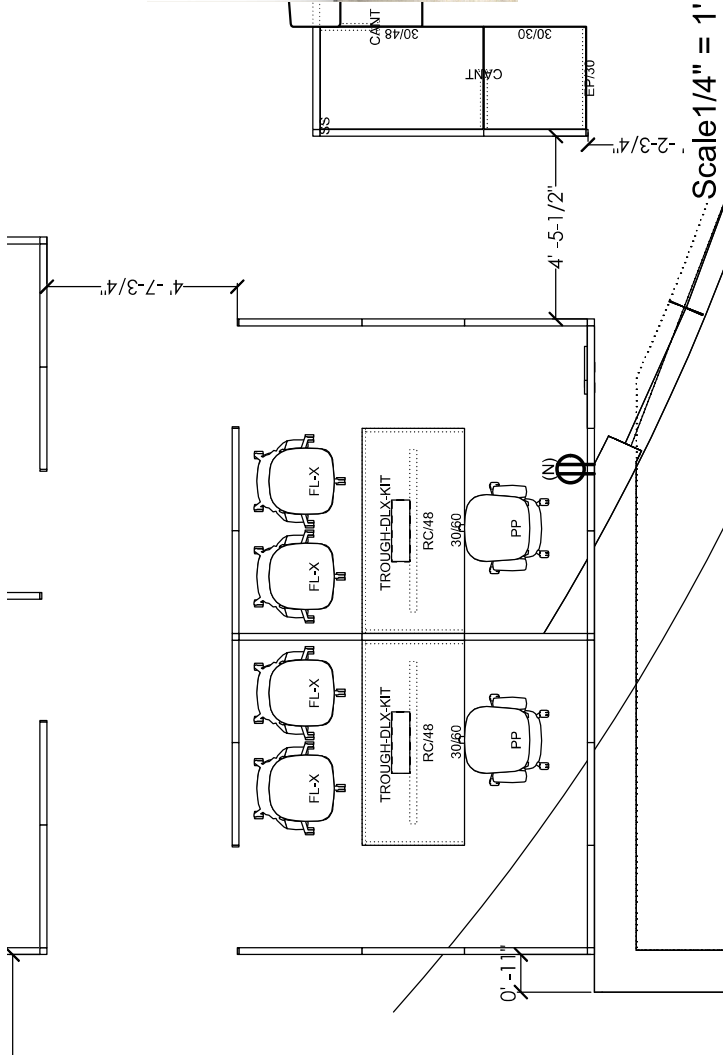


KEY PLAN

DHRC

1737 HUNKINS DR., NORTH LAS VEGAS 89030

DATE: 02/11/2025	REVISIONS:	SCALE:	1/4" = 1' - 0"
ACCOUNT MANAGER: DW	01 XXXXXXXX	DRAWING NO:	F1
			05 OF 12

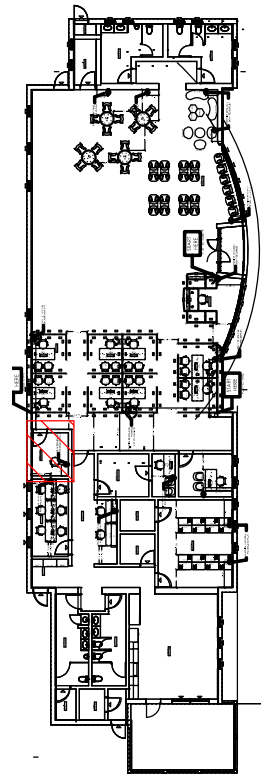
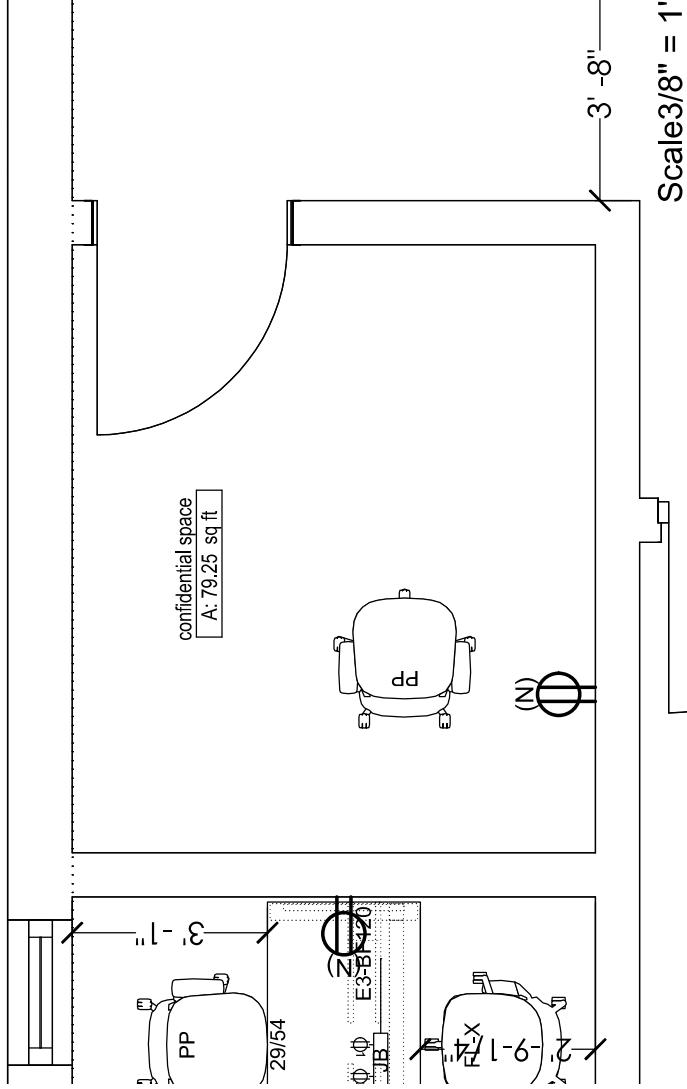


KEY PLAN

DHRC

1737 HUNKINS DR., NORTH LAS VEGAS 89030

DATE: 02/11/2025	REVISIONS:	SCALE:	1/4" = 1' - 0"
ACCOUNT MANAGER: DW	01 XX/XX/XXXX	DRAWING NO:	F1
			06 OF 12



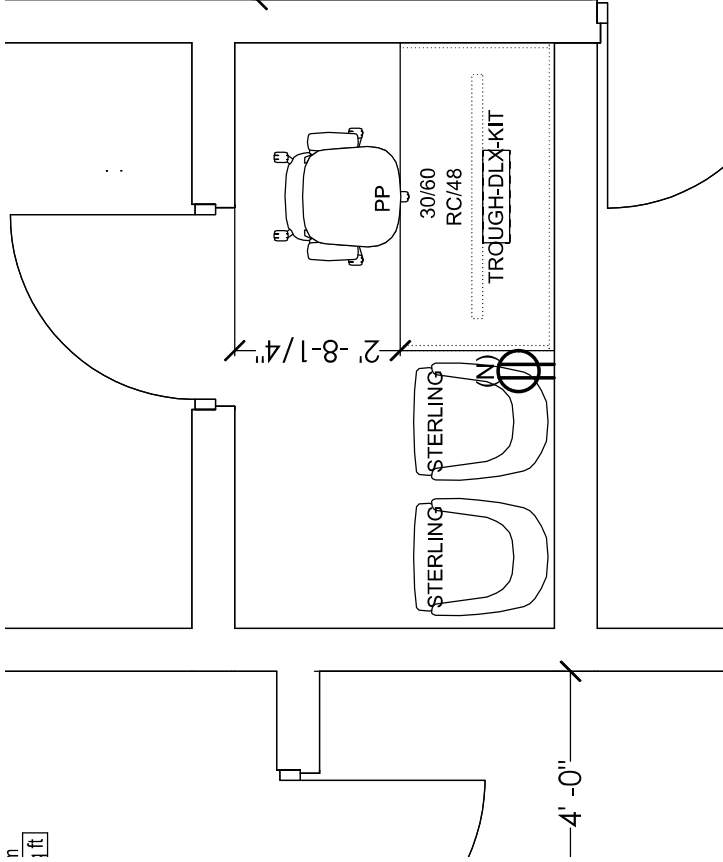
KEY PLAN

DHRC

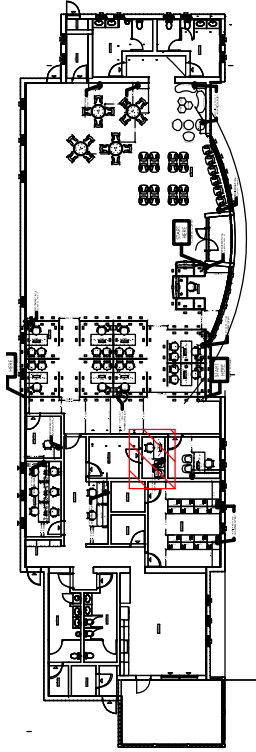
1737 HUNKINS DR., NORTH LAS VEGAS 89030

DATE: 02/11/2025	REVISIONS:	SCALE: 1/4" = 1' - 0"
ACCOUNT MANAGER: DW	01 XXXXXXXX	F1
		DRAWING NO: 07 OF 11

$\frac{n}{1ft}$



Scale $\frac{3}{8}'' = 1'$



KEY PLAN

DHRC

1737 HUNKINS DR., NORTH LAS VEGAS 89030

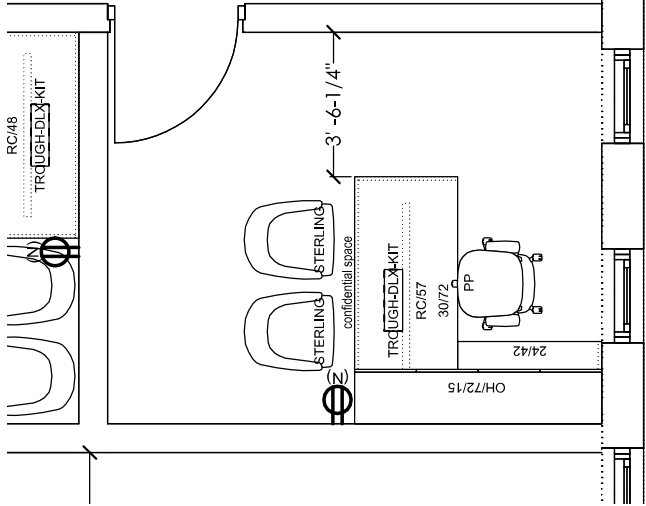
DATE: 02/11/2025

ACCOUNT MANAGER: DW

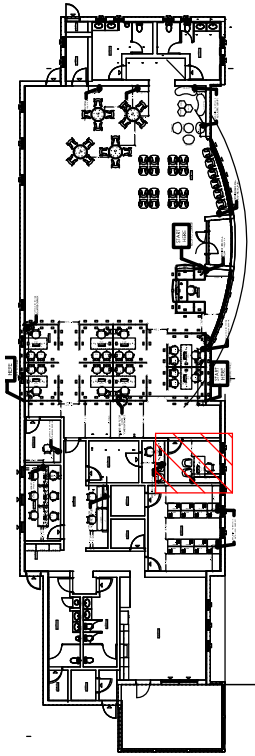
REVISIONS:
01 | XX/XX/XXXX

SCALE: $\frac{1}{4}'' = 1' - 0''$
DRAWING NO: F1 08 OF 12

SWIVEL
COMMERCIAL INTERIORS



Scale 1/4" = 1'



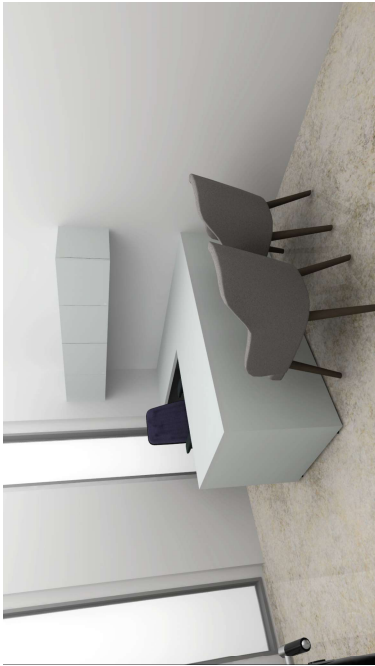
KEY PLAN

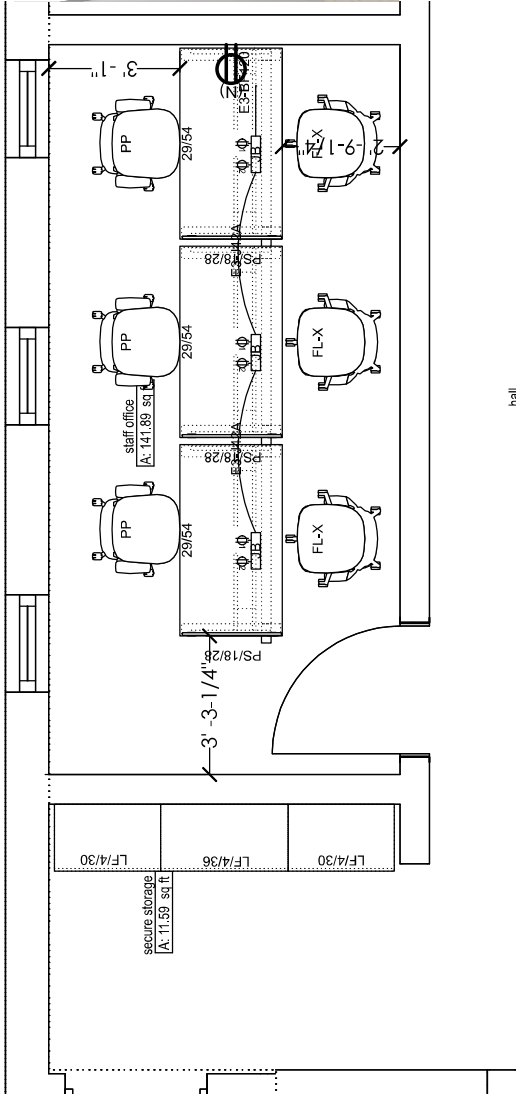
DHRC

1737 HUNKINS DR., NORTH LAS VEGAS 89030

DATE: 02/11/2025	REVISIONS:	SCALE:	1/4" = 1' - 0"
ACCOUNT MANAGER: DW	01 XX/XX/XXXX	DRAWING NO:	F1
			09 OF 12

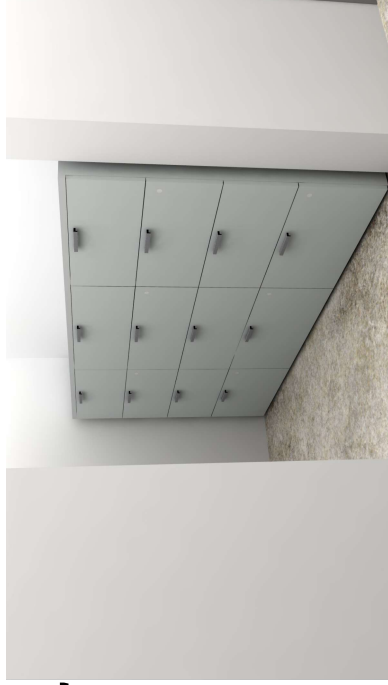
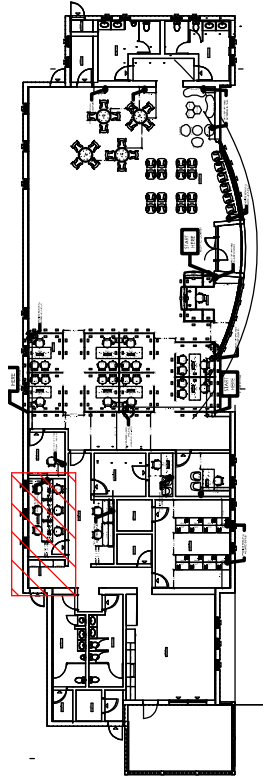
SWIVEL
COMMERCIAL INTERIORS





hall
A: 289.35 sq ft

Scale 1/4" = 1'



KEY PLAN

DHRC

1737 HUNKINS DR., NORTH LAS VEGAS 89030

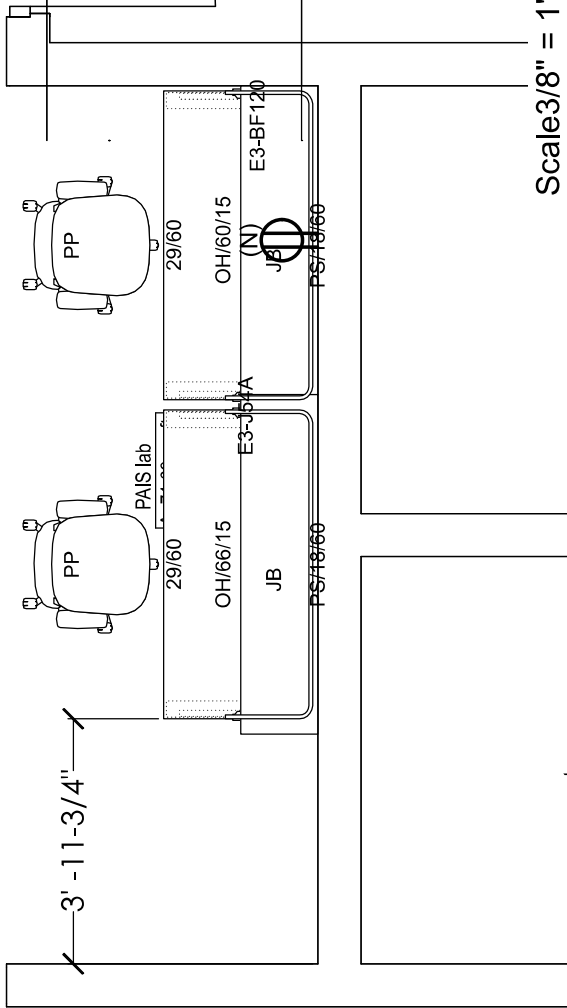
DATE: 02/11/2025

REVISIONS:
01 | XX/XX/XXXX

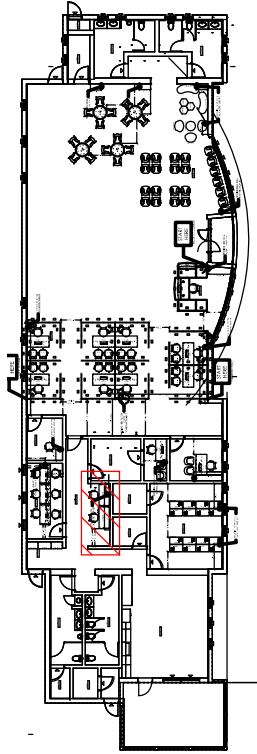
SCALE: 1/4" = 1' - 0"
F1
DRAWING NO: 10 OF 12

ACCOUNT MANAGER: DW

SWIVEL
COMMERCIAL INTERIORS



Scale 3/8" = 1'



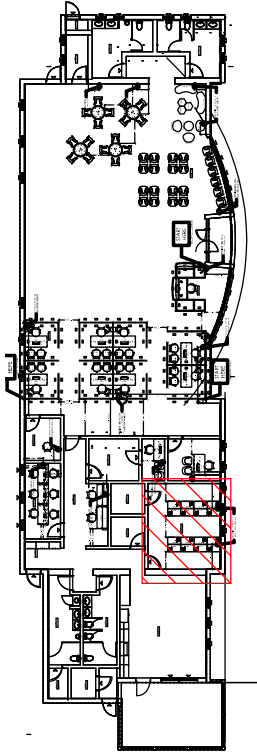
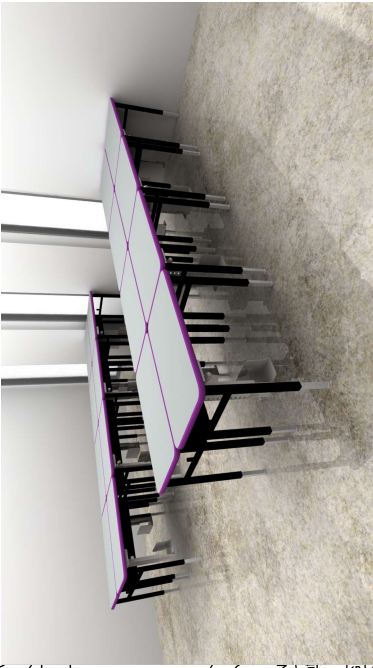
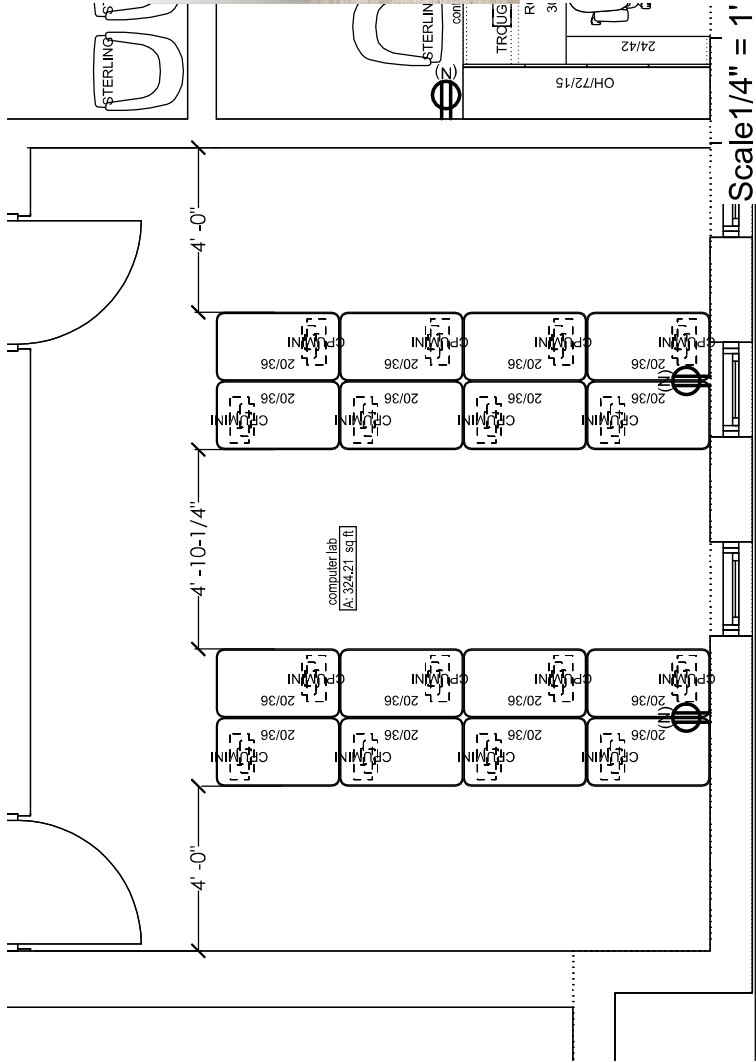
KEY PLAN

DHRC

1737 HUNKINS DR., NORTH LAS VEGAS 89030

DATE: 02/11/2025	REVISIONS:	SCALE:	1/4" = 1' - 0"
ACCOUNT MANAGER: DW	01 XX/XX/XXXX	DRAWING NO:	F1
			11 OF 12

SWIVEL
COMMERCIAL INTERIORS



KEY PLAN

DHRC

1737 HUNKINS DR., NORTH LAS VEGAS 89030

DATE: 02/11/2025	REVISIONS:	SCALE:	1/4" = 1' - 0"
ACCOUNT MANAGER: DW	01 XX/XX/XXXX	DRAWING NO:	F1
			12 OF 12