

**WALLACE MORRIS KLINE SURVEYING, LLC**  
**Land Survey Consulting**

**APN: 124-15-511-005, 006, 124-15-611-004, 005, 006, 007, 009, AND 010**

**EXHIBIT "A"**

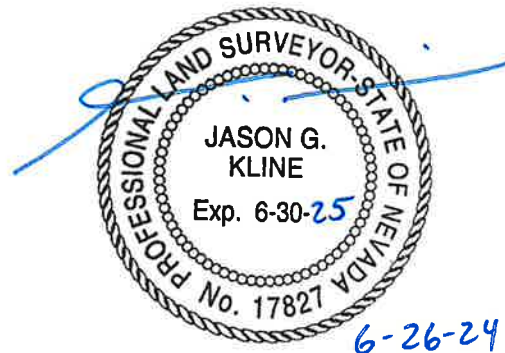
**EXPLANATION:** THIS DESCRIPTION REPRESENTS PORTIONS OF PUBLIC UTILITY AND PEDESTRIAN ACCESS EASEMENTS BEING VACATED IN SUPPORT OF THE "VTS VILLAGE 2" PROJECT.

**DESCRIPTION**

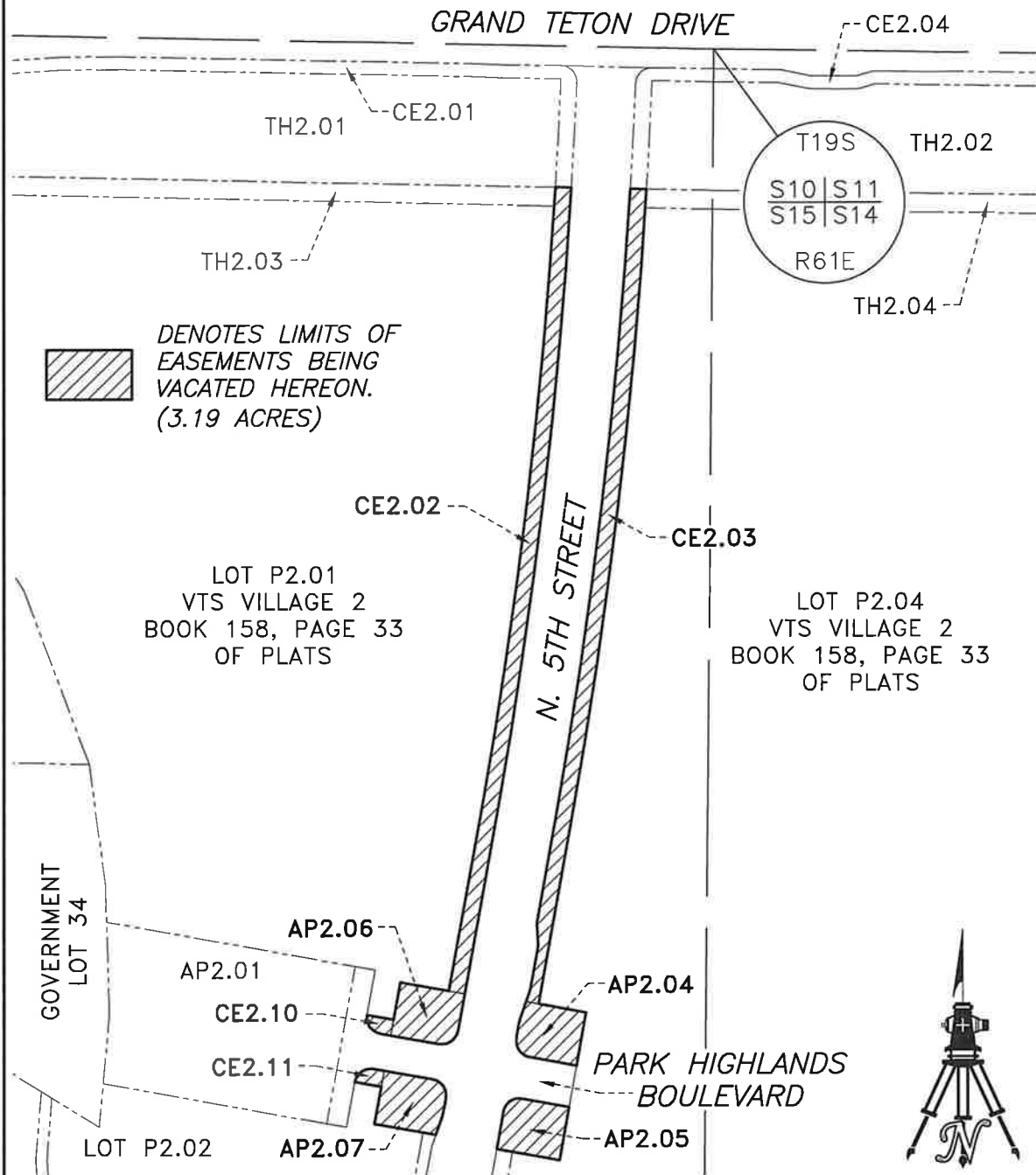
ALL OF THE PUBLIC UTILITY AND PEDESTRIAN ACCESS EASEMENTS GRANTED OVER CE2.02, CE2.03, CE2.10, CE2.11, AP2.04, AP2.05, AP2.06, AND AP2.07 OF "VTS VILLAGE 2" AS SHOWN BY MAP THEREOF IN BOOK 158, PAGE 33 OF PLATS IN THE CLARK COUNTY RECORDER'S OFFICE, NEVADA, LYING WITHIN GOVERNMENT LOTS 19 AND 35 OF SECTION 15, TOWNSHIP 19 SOUTH, RANGE 61 EAST, M.D.M., CITY OF NORTH LAS VEGAS, CLARK COUNTY, NEVADA.

CONTAINING 3.19 ACRES, MORE OR LESS.

JASON G. KLINE, PLS  
NEVADA LICENSE NO. 17827



APN: 124-15-511-005, 006, 124-15-611-004, 005, 006, 007, 009, & 010  
PUBLIC UTILITY AND PEDESTRIAN ACCESS EASEMENT VACATION



P:\WWD\24084\DWG\EXHIBITS\VAC\24084-VAC03-PUE.DWG

WALLACE MORRIS KLINE  
SURVEYING, LLC.  
LAND SURVEY CONSULTING

6525 W. WARM SPRINGS RD.  
#100, LAS VEGAS, NV 89118

### EXHIBIT "B"

LYING WITHIN GOVERNMENT LOTS 19 AND 35 OF  
SECTION 15, T. 19 S., R. 61 E., M.D.M., CITY  
OF NORTH LAS VEGAS, CLARK COUNTY, NEVADA

PAGE 1 OF 1